

ROBO2 Antibody

Catalog No: #37879

Orders: order@signalwayantibody.comSupport: tech@signalwayantibody.com

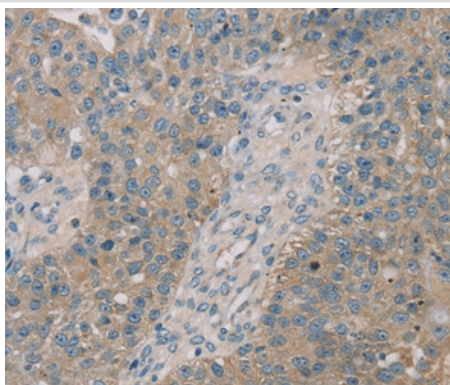
Description

Product Name	ROBO2 Antibody
Host Species	Rabbit
Clonality	Polyclonal
Purification	Antigen affinity purification.
Applications	IHC
Species Reactivity	Hu
Specificity	The antibody detects endogenous levels of total ROBO2 protein.
Immunogen Type	Peptide
Immunogen Description	Synthetic peptide corresponding to residues near the C terminal of human roundabout, axon guidance receptor, homolog 2 (Drosophila)
Target Name	ROBO2
Other Names	SAX3
Accession No.	Swiss-Prot#: Q9HCK4NCBI Gene ID: 6092Gene Accssion: NP_001122401/Q9HCK4
Uniprot	Q9HCK4
GeneID	6092;
Concentration	2.2mg/ml
Formulation	Rabbit IgG in pH7.4 PBS, 0.05% NaN ₃ , 40% Glycerol.
Storage	Store at -20°C

Application Details

Immunohistochemistry: 1:25-1:100

Images



Immunohistochemical analysis of paraffin-embedded Human breast cancer tissue using #37879 at dilution 1/35.

Background

The protein encoded by this gene belongs to the ROBO family, part of the immunoglobulin superfamily of proteins that are highly conserved from fly to human. The encoded protein is a transmembrane receptor for the slit homolog 2 protein and functions in axon guidance and cell migration. Mutations

in this gene are associated with vesicoureteral reflux, characterized by the backward flow of urine from the bladder into the ureters or the kidney. Alternative splicing results in multiple transcript variants.

Note: This product is for in vitro research use only