

RORB Antibody

Catalog No: #37880

Orders: order@signalwayantibody.com

Support: tech@signalwayantibody.com

Description

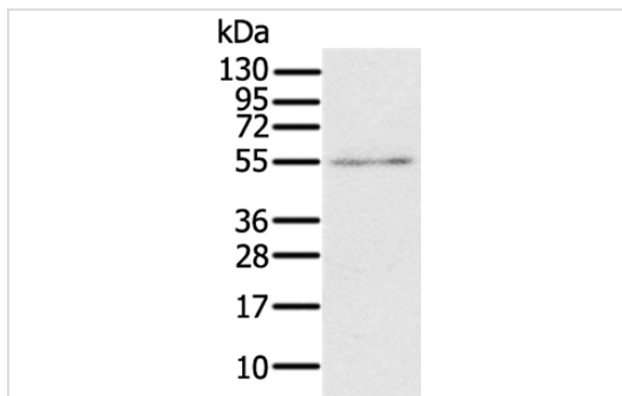
Product Name	RORB Antibody
Host Species	Rabbit
Clonality	Polyclonal
Purification	Antigen affinity purification.
Applications	WB IHC
Species Reactivity	Hu
Specificity	The antibody detects endogenous levels of total RORB protein.
Immunogen Type	Peptide
Immunogen Description	Synthetic peptide corresponding to residues near the N terminal of human RAR-related orphan receptor B
Target Name	RORB
Other Names	RZRB; NR1F2; ROR-BETA; RZR-BETA; bA133M9.1
Accession No.	Swiss-Prot#: Q92753NCBI Gene ID: 6096Gene Accssion: NP_008845/Q92753
Uniprot	Q92753
GeneID	6096;
SDS-PAGE MW	53kd
Concentration	2mg/ml
Formulation	Rabbit IgG in pH7.4 PBS, 0.05% NaN ₃ , 40% Glycerol.
Storage	Store at -20°C

Application Details

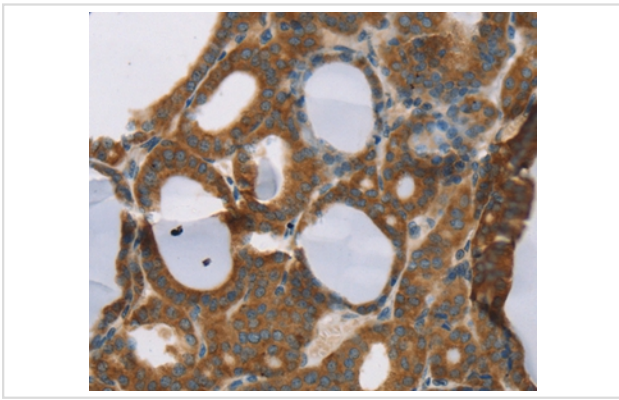
Western blotting: 1:200-1:1000

Immunohistochemistry: 1:25-1:100

Images



Gel: 6%SDS-PAGE
Lysate: 40ug A172 cell
Primary antibody: 1/200 dilution
Secondary antibody dilution: 1/8000
Exposure time: 1 minute



Immunohistochemical analysis of paraffin-embedded Human thyroid cancer tissue using #37880 at dilution 1/30.

Background

The protein encoded by this gene is a member of the NR1 subfamily of nuclear hormone receptors. It is a DNA-binding protein that can bind as a monomer or as a homodimer to hormone response elements upstream of several genes to enhance the expression of those genes. The encoded protein has been shown to interact with NM23-2, a nucleoside diphosphate kinase involved in organogenesis and differentiation, and to help regulate the expression of some genes involved in circadian rhythm.?

Note: This product is for in vitro research use only