

RRAS Antibody

Catalog No: #37881

Orders: order@signalwayantibody.com

Support: tech@signalwayantibody.com

Description

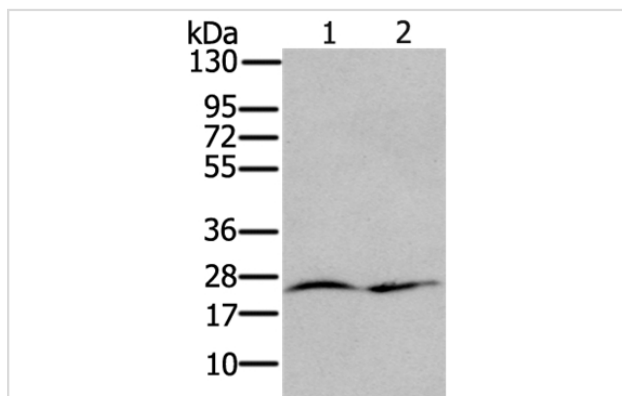
Product Name	RRAS Antibody
Host Species	Rabbit
Clonality	Polyclonal
Purification	Antigen affinity purification.
Applications	WB IHC
Species Reactivity	Hu Ms Rt
Specificity	The antibody detects endogenous levels of total RRAS protein.
Immunogen Type	Peptide
Immunogen Description	Synthetic peptide corresponding to residues near the N terminal of human related RAS viral (r-ras) oncogene homolog
Target Name	RRAS
Other Names	Oncogene RRAS; p23; Ras-related protein R-Ras;
Accession No.	Swiss-Prot#: P10301NCBI Gene ID: 6237Gene Accssion: NP_006261/P10301
Uniprot	P10301
GeneID	6237;
SDS-PAGE MW	23kd
Concentration	1.9mg/ml
Formulation	Rabbit IgG in pH7.4 PBS, 0.05% NaN ₃ , 40% Glycerol.
Storage	Store at -20°C

Application Details

Western blotting: 1:200-1:1000

Immunohistochemistry: 1:25-1:100

Images



Gel: 12%SDS-PAGE

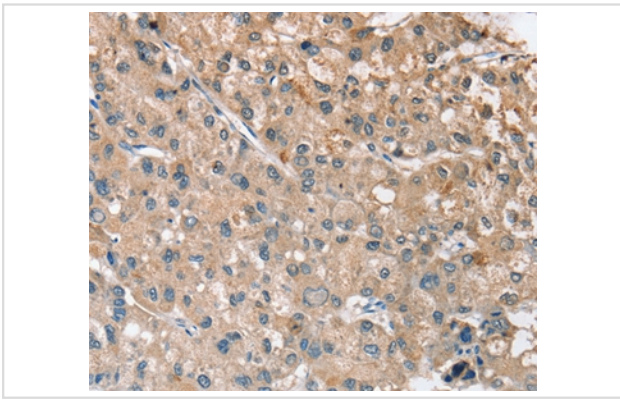
Lysates (from left to right): Human chromaffin cell tumor tissue and NIH/3T3 cell

Amount of lysate: 40ug per lane

Primary antibody: 1/200 dilution

Secondary antibody dilution: 1/8000

Exposure time: 2 minutes



Immunohistochemical analysis of paraffin-embedded Human liver cancer tissue using #37881 at dilution 1/30.

Background

Ras-related protein R-Ras is a protein that in humans is encoded by the RRAS gene. RRAS has been shown to interact with RASSF5, NCK1, Bcl-2, ARAF and RALGDS. Regulates the organization of the actin cytoskeleton. Interacts with PLCE1. Interacts (active GTP-bound form preferentially) with RGS14.

Note: This product is for in vitro research use only