

RPS6KA2 Antibody

Catalog No: #37882

Orders: order@signalwayantibody.comSupport: tech@signalwayantibody.com

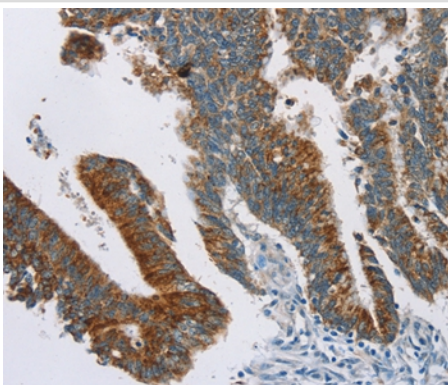
Description

Product Name	RPS6KA2 Antibody
Host Species	Rabbit
Clonality	Polyclonal
Purification	Antigen affinity purification.
Applications	IHC
Species Reactivity	Hu
Specificity	The antibody detects endogenous levels of total RPS6KA2 protein.
Immunogen Type	Peptide
Immunogen Description	Synthetic peptide corresponding to a region derived from internal residues of human ribosomal protein S6 kinase, 90kDa, polypeptide 2
Target Name	RPS6KA2
Other Names	RSK; HU-2; RSK3; p90-RSK3; pp90RSK3; MAPKAPK1C; S6K-alpha; S6K-alpha2
Accession No.	Swiss-Prot#: Q15349NCBI Gene ID: 6196Gene Accssion: NP_001006933/Q15349
Uniprot	Q15349
GeneID	6196;
Concentration	1.4mg/ml
Formulation	Rabbit IgG in pH7.4 PBS, 0.05% NaN ₃ , 40% Glycerol.
Storage	Store at -20°C

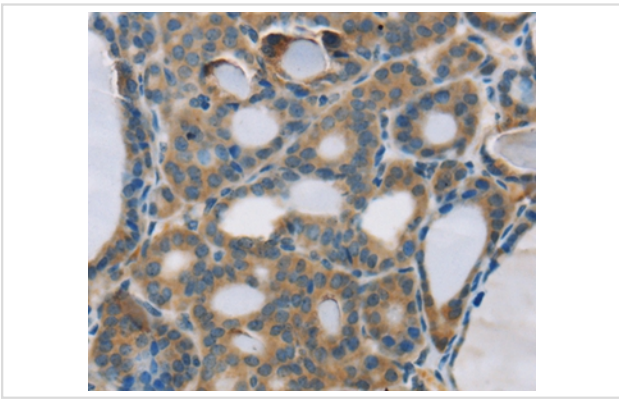
Application Details

Immunohistochemistry: 1:25-1:100

Images



Immunohistochemical analysis of paraffin-embedded Human colorectal cancer tissue using #37882 at dilution 1/20.



Immunohistochemical analysis of paraffin-embedded Human thyroid cancer tissue using #37882 at dilution 1/20.

Background

This gene encodes a member of the RSK (ribosomal S6 kinase) family of serine/threonine kinases. This kinase contains 2 non-identical kinase catalytic domains and phosphorylates various substrates, including members of the mitogen-activated kinase (MAPK) signalling pathway. The activity of this protein has been implicated in controlling cell growth and differentiation. Alternate transcriptional splice variants, encoding different isoforms, have been characterized.?

Note: This product is for in vitro research use only