

RUNX1T1 Antibody

Catalog No: #37883

Orders: order@signalwayantibody.comSupport: tech@signalwayantibody.com

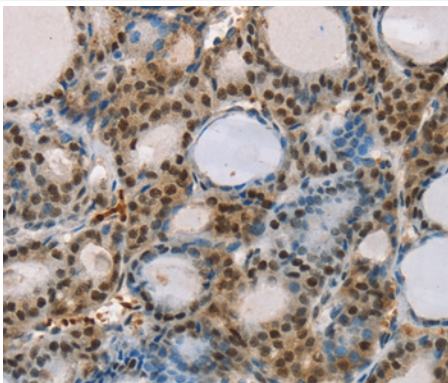
Description

Product Name	RUNX1T1 Antibody
Host Species	Rabbit
Clonality	Polyclonal
Purification	Antigen affinity purification.
Applications	IHC
Species Reactivity	Hu Ms
Specificity	The antibody detects endogenous levels of total RUNX1T1 protein.
Immunogen Type	Peptide
Immunogen Description	Synthetic peptide corresponding to residues near the C terminal of human runt-related transcription factor 1; translocated to, 1 (cyclin D-related)
Target Name	RUNX1T1
Other Names	CDR; ETO; MTG8; AML1T1; ZMYND2; CBFA2T1
Accession No.	Swiss-Prot#: Q06455NCBI Gene ID: 862Gene Accssion: NP_001185554/Q06455
Uniprot	Q06455
GeneID	862;
Concentration	2.3mg/ml
Formulation	Rabbit IgG in pH7.4 PBS, 0.05% NaN ₃ , 40% Glycerol.
Storage	Store at -20°C

Application Details

Immunohistochemistry: 1:25-1:100

Images



Immunohistochemical analysis of paraffin-embedded Human thyroid cancer tissue using #37883 at dilution 1/35.

Background

This gene encodes a member of the myeloid translocation gene family which interact with DNA-bound transcription factors and recruit a range of corepressors to facilitate transcriptional repression. The t(8;21)(q22;q22) translocation is one of the most frequent karyotypic abnormalities in acute

myeloid leukemia. The translocation produces a chimeric gene made up of the 5'-region of the runt-related transcription factor 1 gene fused to the 3'-region of this gene. The chimeric protein is thought to associate with the nuclear corepressor/histone deacetylase complex to block hematopoietic differentiation.?

Note: This product is for in vitro research use only