

PRAF2 Antibody

Catalog No: #37884

Orders: order@signalwayantibody.comSupport: tech@signalwayantibody.com

Description

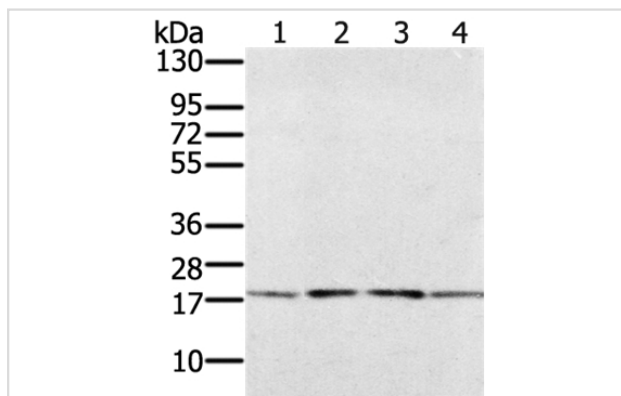
Product Name	PRAF2 Antibody
Host Species	Rabbit
Clonality	Polyclonal
Purification	Antigen affinity purification.
Applications	WB IHC
Species Reactivity	Hu Ms
Specificity	The antibody detects endogenous levels of total PRAF2 protein.
Immunogen Type	Peptide
Immunogen Description	Synthetic peptide corresponding to residues near the N terminal of human PRA1 domain family, member 2
Target Name	PRAF2
Other Names	JM4
Accession No.	Swiss-Prot#: O60831NCBI Gene ID: 11230Gene Accssion: NP_009144/O60831
Uniprot	O60831
GeneID	11230;
SDS-PAGE MW	19kd
Concentration	2.4mg/ml
Formulation	Rabbit IgG in pH7.4 PBS, 0.05% NaN ₃ , 40% Glycerol.
Storage	Store at -20°C

Application Details

Western blotting: 1:200-1:1000

Immunohistochemistry: 1:25-1:100

Images



Gel: 12%SDS-PAGE

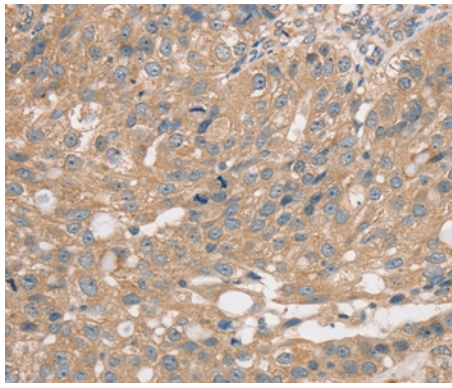
Lysates (from left to right): Human fetal brain tissue and A549 cell, hela and 293T cell

Amount of lysate: 40ug per lane

Primary antibody: 1/200 dilution

Secondary antibody dilution: 1/8000

Exposure time: 20 seconds



Immunohistochemical analysis of paraffin-embedded Human breast cancer tissue using #37884 at dilution 1/35.

Background

JM4 (Jena-Muenchen 4), also known as PRAF2 (PRA1 domain family, member 2), is a 178 amino acid endosomal multi-pass membrane protein involved in vesicular trafficking and Endoplasmic reticulum/Golgi transport. As a member of the PRA1 family, JM4 contains four putative transmembrane (TM) domains, interacts with the CC chemokine receptor 5 (CCR5) and colocalizes with Calnexin in the ER and mannose 6-phosphate receptor (CD-MPR) in the Golgi apparatus.?

Note: This product is for in vitro research use only