

RYR1 Antibody

Catalog No: #37887

Orders: order@signalwayantibody.com

Support: tech@signalwayantibody.com

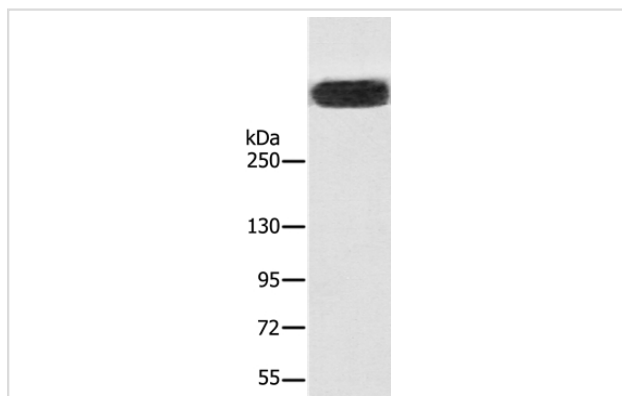
Description

Product Name	RYR1 Antibody
Host Species	Rabbit
Clonality	Polyclonal
Purification	Antigen affinity purification.
Applications	WB
Species Reactivity	Hu Ms
Specificity	The antibody detects endogenous levels of total RYR1 protein.
Immunogen Type	Peptide
Immunogen Description	Synthetic peptide corresponding to a region derived from internal residues of human ryanodine receptor 1 (skeletal)
Target Name	RYR1
Other Names	CCO; MHS; RYR; MHS1; RYDR; SKRR; RYR-1; PPP1R137
Accession No.	Swiss-Prot#: P21817NCBI Gene ID: 6261Gene Accssion: NP_000531/P21817
Uniprot	P21817
GeneID	6261;
SDS-PAGE MW	565kd
Concentration	2.2mg/ml
Formulation	Rabbit IgG in pH7.4 PBS, 0.05% NaN ₃ , 40% Glycerol.
Storage	Store at -20°C

Application Details

Western blotting: 1:200-1:1000

Images



Gel: 6%SDS-PAGE
 Lysates (from left to right): Mouse brain tissue
 Amount of lysate: 40ug per lane
 Primary antibody: 1/400 dilution
 Secondary antibody dilution: 1/8000
 Exposure time: 2 minutes

Background

This gene encodes a ryanodine receptor found in skeletal muscle. The encoded protein functions as a calcium release channel in the sarcoplasmic

reticulum but also serves to connect the sarcoplasmic reticulum and transverse tubule. Mutations in this gene are associated with malignant hyperthermia susceptibility, central core disease, and minicore myopathy with external ophthalmoplegia. Alternatively spliced transcripts encoding different isoforms have been described.?

Note: This product is for in vitro research use only