

SYCP3 Antibody

Catalog No: #37900

Orders: order@signalwayantibody.comSupport: tech@signalwayantibody.com

Description

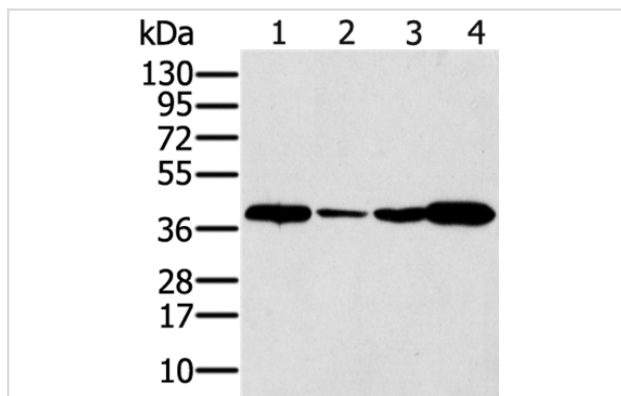
Product Name	SYCP3 Antibody
Host Species	Rabbit
Clonality	Polyclonal
Purification	Antigen affinity purification.
Applications	WB IHC
Species Reactivity	Hu
Specificity	The antibody detects endogenous levels of total SYCP3 protein.
Immunogen Type	Peptide
Immunogen Description	Synthetic peptide corresponding to residues near the C terminal of human synaptonemal complex protein 3
Target Name	SYCP3
Other Names	COR1; SCP3; SPGF4
Accession No.	Swiss-Prot#: Q8IZU3NCBI Gene ID: 50511Gene Accssion: NP_001171419/Q8IZU3
Uniprot	Q8IZU3
GeneID	50511;
SDS-PAGE MW	28kd
Concentration	0.8mg/ml
Formulation	Rabbit IgG in pH7.4 PBS, 0.05% NaN ₃ , 40% Glycerol.
Storage	Store at -20°C

Application Details

Western blotting: 1:500-1:2000

Immunohistochemistry: 1:25-1:100

Images



Gel: 12%SDS-PAGE

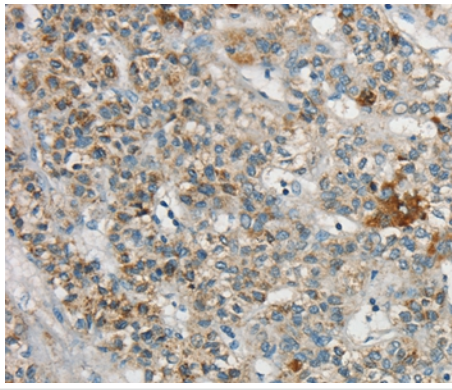
Lysates (from left to right): Human testis and seminoma tissue, Jurkat cell and human liver cancer tissue

Amount of lysate: 40ug per lane

Primary antibody: 1/200 dilution

Secondary antibody dilution: 1/8000

Exposure time: 40 seconds



Immunohistochemical analysis of paraffin-embedded Human liver cancer tissue using #37900 at dilution 1/20.

Background

This gene encodes an essential structural component of the synaptonemal complex. This complex is involved in synapsis, recombination and segregation of meiotic chromosomes. Mutations in this gene are associated with azoospermia in males and susceptibility to pregnancy loss in females. Alternate splicing results in multiple transcript variants that encode the same protein.?

Note: This product is for in vitro research use only