

## CWC27 Antibody

Catalog No: #37901

Orders: order@signalwayantibody.com

Support: tech@signalwayantibody.com

## Description

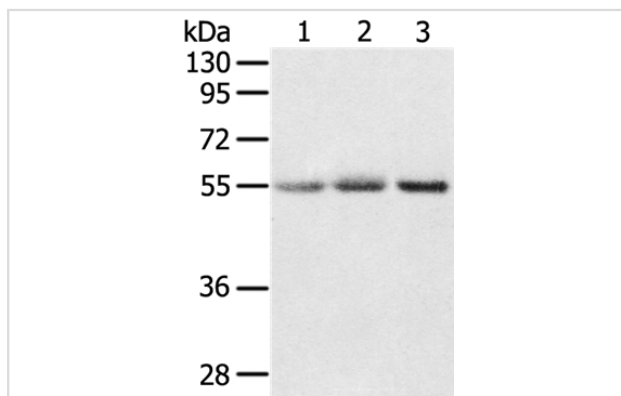
|                       |   |
|-----------------------|---|
| Product Name          | CWC27 Antibody  |
| Host Species          | Rabbit  |
| Clonality             | Polyclonal  |
| Purification          | Antigen affinity purification.  |
| Applications          | WB IHC  |
| Species Reactivity    | Hu  |
| Specificity           | The antibody detects endogenous levels of total CWC27 protein.  |
| Immunogen Type        | Peptide   |
| Immunogen Description | Synthetic peptide corresponding to a region derived from internal residues of human CWC27 spliceosome-associated protein homolog ( <i>S. cerevisiae</i> ) |
| Target Name           | CWC27   |
| Other Names           | NY-CO-10; SDCCAG10  |
| Accession No.         | Swiss-Prot#: Q6UX04NCBI Gene ID: 10283Gene Accssion: NP_005860/Q6UX04   |
| Uniprot               | Q6UX04  |
| GeneID                | 10283;  |
| SDS-PAGE MW           | 54kd  |
| Concentration         | 2.6mg/ml  |
| Formulation           | Rabbit IgG in pH7.4 PBS, 0.05% NaN <sub>3</sub> , 40% Glycerol.   |
| Storage               | Store at -20°C  |

## Application Details

Western blotting: 1:200-1:1000

Immunohistochemistry: 1:25-1:100

## Images



Gel: 8%SDS-PAGE

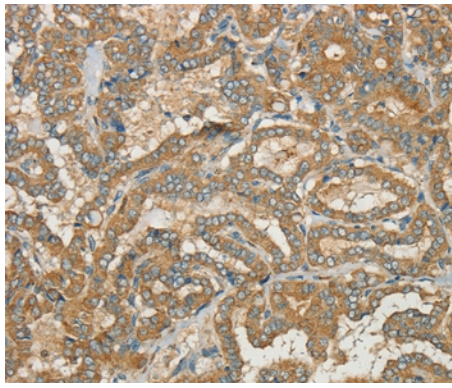
Lysates (from left to right): Human liver cancer and normal colon tissue, human placenta tissue

Amount of lysate: 40ug per lane

Primary antibody: 1/200 dilution

Secondary antibody dilution: 1/8000

Exposure time: 5 minutes



Immunohistochemical analysis of paraffin-embedded Human thyroid cancer tissue using #37901 at dilution 1/40.

## Background

CWC27 belongs to the cyclophilin-type PPIase family and contains 1 PPIase cyclophilin-type domain. There are two isoforms. PPIases accelerate the folding of proteins.

Note: This product is for in vitro research use only