

NEMF Antibody

Catalog No: #37902

Orders: order@signalwayantibody.comSupport: tech@signalwayantibody.com

Description

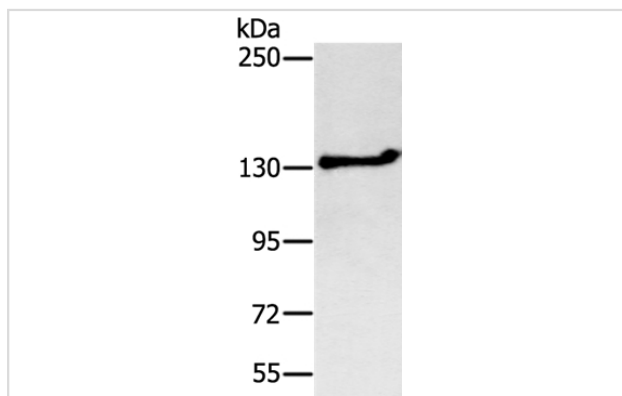
Product Name	NEMF Antibody
Host Species	Rabbit
Clonality	Polyclonal
Purification	Antigen affinity purification.
Applications	WB IHC
Species Reactivity	Hu
Specificity	The antibody detects endogenous levels of total NEMF protein.
Immunogen Type	Peptide
Immunogen Description	Synthetic peptide corresponding to a region derived from internal residues of human nuclear export mediator factor
Target Name	NEMF
Other Names	NY-CO-1; SDCCAG1
Accession No.	Swiss-Prot#: O60524NCBI Gene ID: 9147Gene Accssion: NP_004704/O60524
Uniprot	O60524
GeneID	9147;
SDS-PAGE MW	123kd
Concentration	1.8mg/ml
Formulation	Rabbit IgG in pH7.4 PBS, 0.05% NaN ₃ , 40% Glycerol.
Storage	Store at -20°C

Application Details

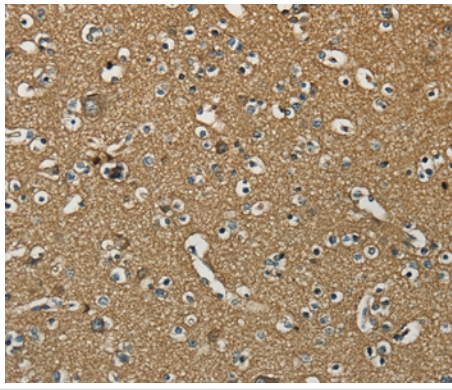
Western blotting: 1:200-1:1000

Immunohistochemistry: 1:25-1:100

Images



Gel: 6%SDS-PAGE
Lysate: 40ug Jurkat cell
Primary antibody: 1/200 dilution
Secondary antibody dilution: 1/8000
Exposure time: 5 minutes



Immunohistochemical analysis of paraffin-embedded Human brain tissue using #37902 at dilution 1/30.

Background

SDCCAG1, which called NY-CO-1, from a colon cancer cDNA library. The deduced 362-amino acid protein contains a nuclear targeting signal. Expressed in brain, heart, liver, lung, spleen, and skeletal muscle. Also expressed at lower levels in stomach and testis.

Note: This product is for in vitro research use only