

SDHB Antibody

Catalog No: #37903

Orders: order@signalwayantibody.com

Support: tech@signalwayantibody.com

Description

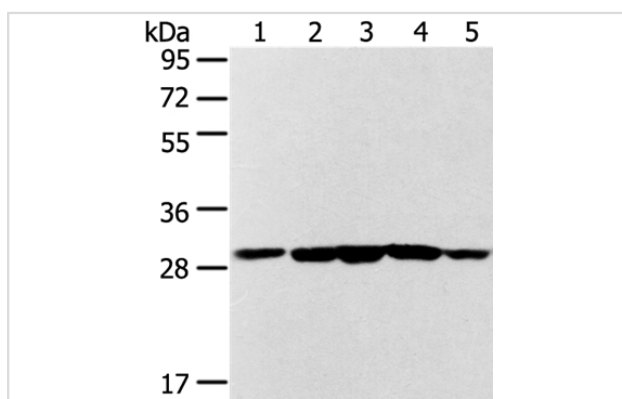
Product Name	SDHB Antibody
Host Species	Rabbit
Clonality	Polyclonal
Purification	Antigen affinity purification.
Applications	WB IHC
Species Reactivity	Hu Ms
Specificity	The antibody detects endogenous levels of total SDHB protein.
Immunogen Type	Peptide
Immunogen Description	Synthetic peptide corresponding to a region derived from internal residues of human succinate dehydrogenase complex, subunit B, iron sulfur (Ip)
Target Name	SDHB
Other Names	IP; SDH; CWS2; PGL4; SDH1; SDH2; SDHIP
Accession No.	Swiss-Prot#: P21912NCBI Gene ID: 6390Gene Accssion: NP_002991/P21912
Uniprot	P21912
GeneID	6390;
SDS-PAGE MW	32kd
Concentration	1.3mg/ml
Formulation	Rabbit IgG in pH7.4 PBS, 0.05% NaN ₃ , 40% Glycerol.
Storage	Store at -20°C

Application Details

Western blotting: 1:500-1:2000

Immunohistochemistry: 1:25-1:100

Images



Gel: 8%SDS-PAGE

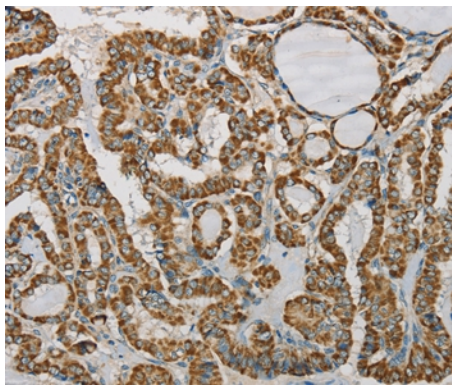
Lysates (from left to right): 293T cell and mouse brain tissue, human fetal liver tissue and hepg2 cell, Jurkat cell

Amount of lysate: 40ug per lane

Primary antibody: 1/300 dilution

Secondary antibody dilution: 1/8000

Exposure time: 30 seconds



Immunohistochemical analysis of paraffin-embedded Human thyroid cancer tissue using #37903 at dilution 1/20.

Background

Complex II of the respiratory chain, which is specifically involved in the oxidation of succinate, carries electrons from FADH to CoQ. The complex is composed of four nuclear-encoded subunits and is localized in the mitochondrial inner membrane. The iron-sulfur subunit is highly conserved and contains three cysteine-rich clusters which may comprise the iron-sulfur centers of the enzyme. Sporadic and familial mutations in this gene result in paragangliomas and pheochromocytoma, and support a link between mitochondrial dysfunction and tumorigenesis.

Note: This product is for in vitro research use only