

ATP2A3 Antibody

Catalog No: #37910

Orders: order@signalwayantibody.comSupport: tech@signalwayantibody.com

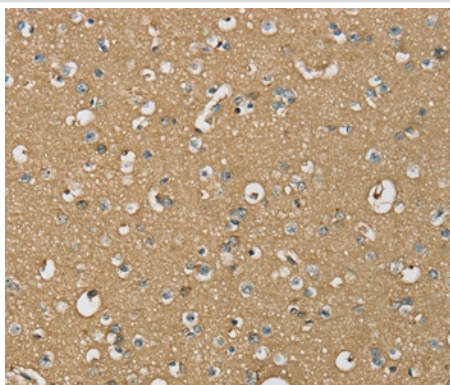
Description

Product Name	ATP2A3 Antibody
Host Species	Rabbit
Clonality	Polyclonal
Purification	Antigen affinity purification.
Applications	IHC
Species Reactivity	Hu
Specificity	The antibody detects endogenous levels of total ATP2A3 protein.
Immunogen Type	Peptide
Immunogen Description	Synthetic peptide corresponding to a region derived from internal residues of human ATPase, Ca ⁺⁺ transporting, ubiquitous
Target Name	ATP2A3
Other Names	SERCA3
Accession No.	Swiss-Prot#: Q93084NCBI Gene ID: 489Gene Accssion: NP_777615/Q93084
Uniprot	Q93084
GeneID	489;
Concentration	1.8mg/ml
Formulation	Rabbit IgG in pH7.4 PBS, 0.05% NaN ₃ , 40% Glycerol.
Storage	Store at -20°C

Application Details

Immunohistochemistry: 1:25-1:100

Images



Immunohistochemical analysis of paraffin-embedded Human brain tissue using #37910 at dilution 1/30.

Background

This gene encodes one of the SERCA Ca⁽²⁺⁾-ATPases, which are intracellular pumps located in the sarcoplasmic or endoplasmic reticula of muscle cells. This enzyme catalyzes the hydrolysis of ATP coupled with the translocation of calcium from the cytosol to the sarcoplasmic reticulum lumen, and

is involved in calcium sequestration associated with muscular excitation and contraction. Alternative splicing results in multiple transcript variants encoding different isoforms.?

Note: This product is for in vitro research use only