

SERINC1 Antibody

Catalog No: #37911

Orders: order@signalwayantibody.comSupport: tech@signalwayantibody.com

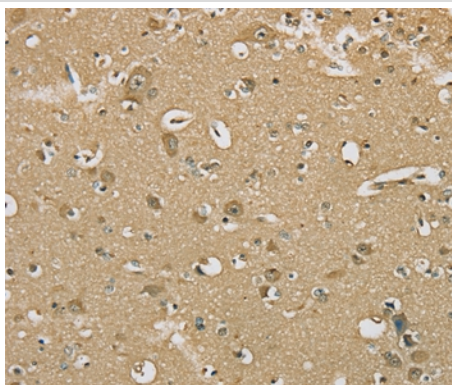
Description

Product Name	SERINC1 Antibody
Host Species	Rabbit
Clonality	Polyclonal
Purification	Antigen affinity purification.
Applications	IHC
Species Reactivity	Hu
Specificity	The antibody detects endogenous levels of total SERINC1 protein.
Immunogen Type	Peptide
Immunogen Description	Synthetic peptide corresponding to a region derived from internal residues of human serine incorporator 1
Target Name	SERINC1
Other Names	TDE2; TMS2; TDE1L; TMS-2
Accession No.	Swiss-Prot#: Q9NRX5NCBI Gene ID: 57515Gene Accssion: NP_065806/Q9NRX5
Uniprot	Q9NRX5
GeneID	57515;
Concentration	2mg/ml
Formulation	Rabbit IgG in pH7.4 PBS, 0.05% NaN ₃ , 40% Glycerol.
Storage	Store at -20°C

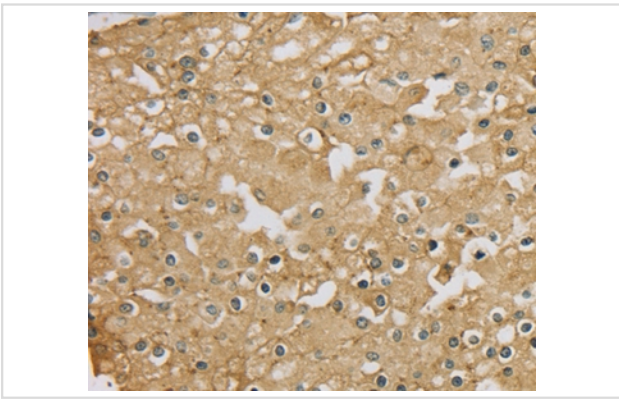
Application Details

Immunohistochemistry: 1:25-1:100

Images



Immunohistochemical analysis of paraffin-embedded Human brain tissue using #37911 at dilution 1/30.



Immunohistochemical analysis of paraffin-embedded Human prostate cancer tissue using #37911 at dilution 1/30.

Background

Serine incorporator 1 is a protein that in humans is encoded by the *SERINC1* gene. Enhances the incorporation of serine into phosphatidylserine and sphingolipids. Interacts with SPTLC1.

Note: This product is for in vitro research use only