

SERINC2 Antibody

Catalog No: #37912

Orders: order@signalwayantibody.com

Support: tech@signalwayantibody.com

Description

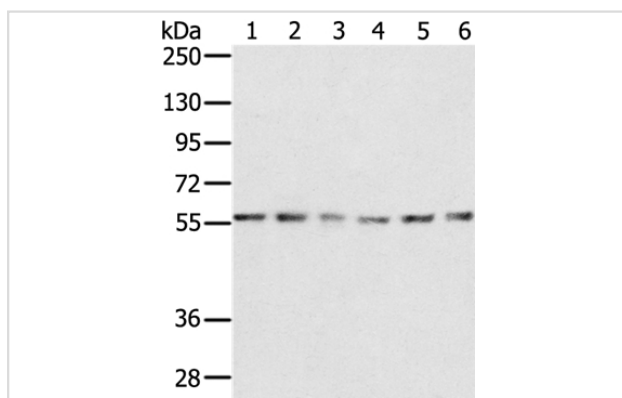
Product Name	SERINC2 Antibody
Host Species	Rabbit
Clonality	Polyclonal
Purification	Antigen affinity purification.
Applications	WB IHC
Species Reactivity	Hu Ms
Specificity	The antibody detects endogenous levels of total SERINC2 protein.
Immunogen Type	Peptide
Immunogen Description	Synthetic peptide corresponding to a region derived from internal residues of human serine incorporator 2
Target Name	SERINC2
Other Names	TDE2; TDE2L; FKSG84; PRO0899
Accession No.	Swiss-Prot#: Q96SA4NCBI Gene ID: 347735Gene Accssion: NP_849196/Q96SA4
Uniprot	Q96SA4
GeneID	347735;
SDS-PAGE MW	51kd
Concentration	1.3mg/ml
Formulation	Rabbit IgG in pH7.4 PBS, 0.05% NaN ₃ , 40% Glycerol.
Storage	Store at -20°C

Application Details

Western blotting: 1:200-1:1000

Immunohistochemistry: 1:25-1:100

Images



Gel: 8%SDS-PAGE

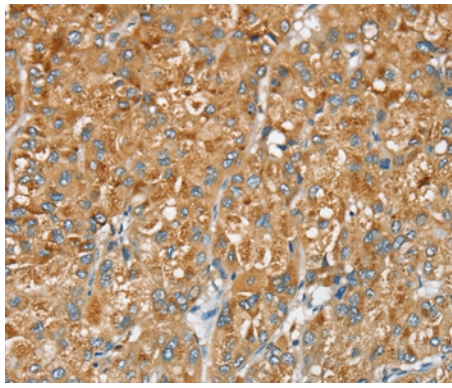
Lysates (from left to right): K562, NIH/3T3, Jurkat, 293T, 231 and hepg2 cell

Amount of lysate: 40ug per lane

Primary antibody: 1/200 dilution

Secondary antibody dilution: 1/8000

Exposure time: 1 minute



Immunohistochemical analysis of paraffin-embedded Human liver cancer tissue using #37912 at dilution 1/20.

Background

SERINC2 involved in phosphatidylserine metabolic process, and positive regulation of transferase activity.

Note: This product is for in vitro research use only