

SERINC3 Antibody

Catalog No: #37913

Orders: order@signalwayantibody.comSupport: tech@signalwayantibody.com

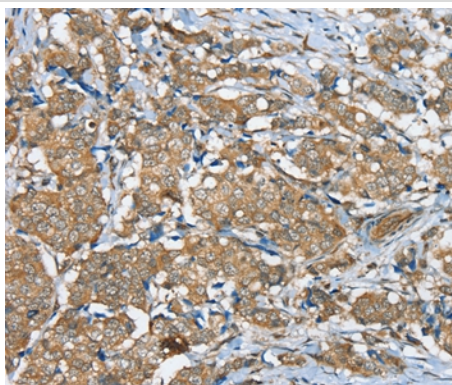
Description

Product Name	SERINC3 Antibody
Host Species	Rabbit
Clonality	Polyclonal
Purification	Antigen affinity purification.
Applications	IHC
Species Reactivity	Hu
Specificity	The antibody detects endogenous levels of total SERINC3 protein.
Immunogen Type	Peptide
Immunogen Description	Synthetic peptide corresponding to a region derived from internal residues of human serine incorporator 3
Target Name	SERINC3
Other Names	TDE; TDE1; AIGP1; TMS-1; DIFF33; SBBI99
Accession No.	Swiss-Prot#: Q13530NCBI Gene ID: 10955Gene Accssion: NP_006802/Q13530
Uniprot	Q13530
GeneID	10955;
Concentration	2.5mg/ml
Formulation	Rabbit IgG in pH7.4 PBS, 0.05% NaN ₃ , 40% Glycerol.
Storage	Store at -20°C

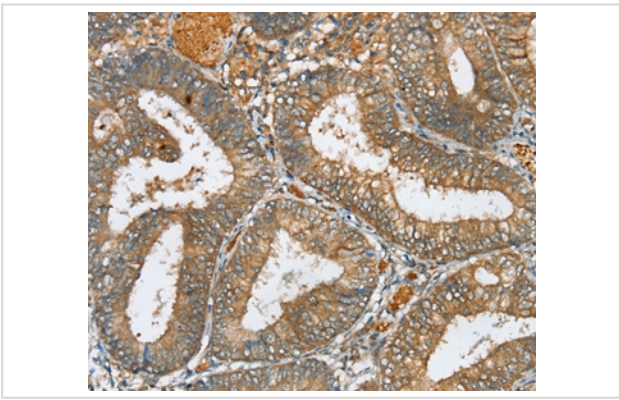
Application Details

Immunohistochemistry: 1:25-1:100

Images



Immunohistochemical analysis of paraffin-embedded Human breast cancer tissue using #37913 at dilution 1/40.



Immunohistochemical analysis of paraffin-embedded Human colon cancer tissue using #37913 at dilution 1/40.

Background

TDE1, tumor differentially expressed protein 1, is a multi-pass membrane protein also known as serine incorporator 3. Also found on the membranes of the Golgi apparatus within cells, TDE1 is highly expressed in neuronal populations but is also found in thymus, kidney, liver and testis. Expression levels of TDE1 in tumors can be as much as tenfold the amount found in normal tissue of the same type. This increased expression implicates TDE1 as being involved in the cellular transformation from normal to malignant tissue.?

Note: This product is for in vitro research use only