

SERINC4 Antibody

Catalog No: #37914

Orders: order@signalwayantibody.comSupport: tech@signalwayantibody.com

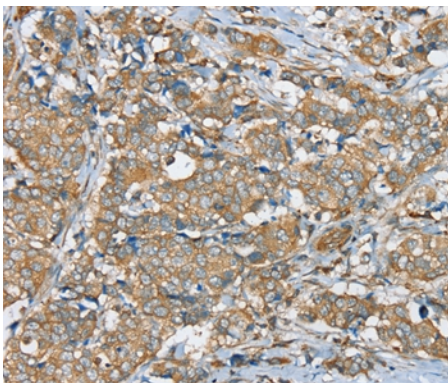
Description

Product Name	SERINC4 Antibody
Host Species	Rabbit
Clonality	Polyclonal
Purification	Antigen affinity purification.
Applications	IHC
Species Reactivity	Hu
Specificity	The antibody detects endogenous levels of total SERINC4 protein.
Immunogen Type	Peptide
Immunogen Description	Synthetic peptide corresponding to residues near the C terminal of human serine incorporator 4
Target Name	SERINC4
Other Names	A6NH21; FLJ40363; SERINC4; serine incorporator 4
Accession No.	Swiss-Prot#: A6NH21NCBI Gene ID: 619189Gene Accssion: NP_001244960/A6NH21
Uniprot	A6NH21
GeneID	619189;
Concentration	2.8mg/ml
Formulation	Rabbit IgG in pH7.4 PBS, 0.05% NaN ₃ , 40% Glycerol.
Storage	Store at -20°C

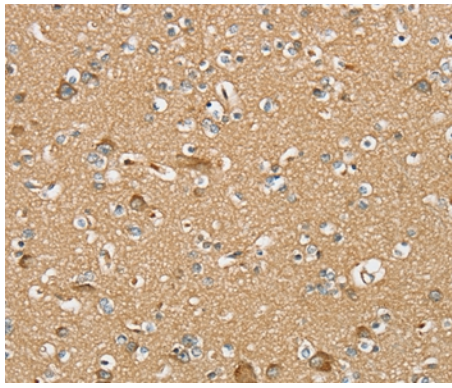
Application Details

Immunohistochemistry: 1:25-1:100

Images



Immunohistochemical analysis of paraffin-embedded Human breast cancer tissue using #37914 at dilution 1/40.



Immunohistochemical analysis of paraffin-embedded Human brain tissue using #37914 at dilution 1/40.

Background

SERINC4 (serine incorporator 4) is a 518 amino acid multi-pass membrane protein that belongs to the TDE1 family. The SERINC4 protein incorporates a polar amino acid serine into membranes and facilitates the synthesis of two serine-derived lipids, phosphatidylserine and sphingolipids. Because SERINC proteins contain 11 transmembrane segments resembling amino acid transporters, SERINC4 may also function as an L-serine transporter by carrying serine molecules into the hydrophobic milieu of membrane lipid bilayers.?

Note: This product is for in vitro research use only