

SERPINA11 Antibody

Catalog No: #37915

Orders: order@signalwayantibody.comSupport: tech@signalwayantibody.com

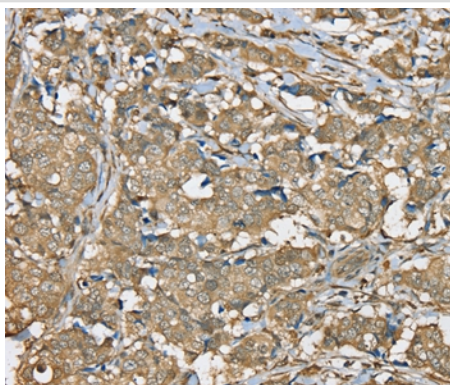
Description

Product Name	SERPINA11 Antibody
Host Species	Rabbit
Clonality	Polyclonal
Purification	Antigen affinity purification.
Applications	IHC
Species Reactivity	Hu
Specificity	The antibody detects endogenous levels of total SERPINA11 protein.
Immunogen Type	Peptide
Immunogen Description	Synthetic peptide corresponding to a region derived from internal residues of human serpin peptidase inhibitor, clade A (alpha-1 antitrypsin, antitrypsin), member 11
Target Name	SERPINA11
Other Names	ntiproteinase-like 2; Q86U17; SERPINA11
Accession No.	Swiss-Prot#: Q86U17NCBI Gene ID: 256394Gene Accssion: NP_001073920/Q86U17
Uniprot	Q86U17
GeneID	256394;
Concentration	2.4mg/ml
Formulation	Rabbit IgG in pH7.4 PBS, 0.05% NaN ₃ , 40% Glycerol.
Storage	Store at -20°C

Application Details

Immunohistochemistry: 1:25-1:100

Images



Immunohistochemical analysis of paraffin-embedded Human breast cancer tissue using #37915 at dilution 1/35.

Background

The protein belongs to the serpin family. SERPINA11 has serine-type endopeptidase inhibitor activity, negative regulation of endopeptidase activity, regulation of proteolysis, serine-type endopeptidase inhibitor activity.

Note: This product is for in vitro research use only