

SEZ6L Antibody

Catalog No: #37918

Orders: order@signalwayantibody.comSupport: tech@signalwayantibody.com

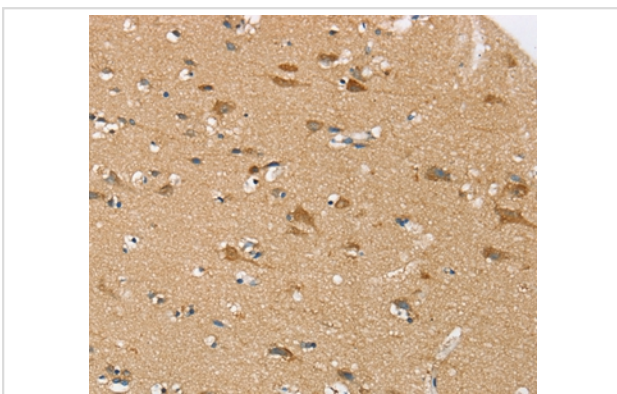
Description

Product Name	SEZ6L Antibody
Host Species	Rabbit
Clonality	Polyclonal
Purification	Antigen affinity purification.
Applications	IHC
Species Reactivity	Hu Ms
Specificity	The antibody detects endogenous levels of total SEZ6L protein.
Immunogen Type	Peptide
Immunogen Description	Synthetic peptide corresponding to residues near the C terminal of human seizure related 6 homolog (mouse)-like
Target Name	SEZ6L
Other Names	KIAA0927; SE6L1; Seizure 6-like protein;
Accession No.	Swiss-Prot#: Q9BYH1NCBI Gene ID: 23544Gene Accssion: NP_066938/Q9BYH1
Uniprot	Q9BYH1
GeneID	23544;
Concentration	0.6 mg/ml
Formulation	Rabbit IgG in pH7.4 PBS, 0.05% NaN ₃ , 40% Glycerol.
Storage	Store at -20°C

Application Details

Immunohistochemistry: 1:25-1:100

Images



Immunohistochemical analysis of paraffin-embedded Human brain tissue using #37918 at dilution 1/30.

Background

SEZ6L (seizure related 6 homolog-like) is a 1,024 amino acid single-pass type I membrane protein that localizes to the endoplasmic reticulum. Widely expressed, SEZ6L is a candidate tumor suppressor gene and may contribute to specialized endoplasmic reticulum functions in neurons. SEZ6L

contains three CUB domains and five sushi (CCP/SCR) domains, which may be involved in protein-protein interactions and signal transduction. The gene encoding SEZ6L is located on human chromosome 22, which houses over 500 genes and is the second smallest human chromosome. Mutations in several of the genes that map to chromosome 22 are involved in the development of Phelan-McDermid syndrome, Neurofibromatosis type 2, autism and schizophrenia.

Note: This product is for in vitro research use only