

SIGLEC15 Antibody

Catalog No: #37925

Orders: order@signalwayantibody.com

Support: tech@signalwayantibody.com

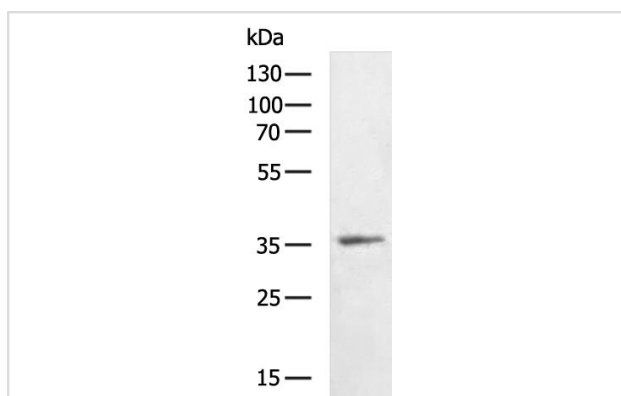
Description

Product Name	SIGLEC15 Antibody
Host Species	Rabbit
Clonality	Polyclonal
Purification	Antigen affinity purification.
Applications	WB,IHC
Species Reactivity	Hu Ms
Specificity	The antibody detects endogenous levels of total SIGLEC15 protein.
Immunogen Type	Peptide
Immunogen Description	Synthetic peptide of human SIGLEC15
Target Name	SIGLEC15
Other Names	CD33L3; HsT1361; SIGLEC-15
Accession No.	Swiss-Prot#: Q6ZMC9NCBI Gene ID: 284266Gene Accssion: NP_998767/Q6ZMC9
Uniprot	Q6ZMC9
GeneID	284266;
Calculated MW	36kDa
Concentration	0.9mg/ml
Formulation	Rabbit IgG in pH7.4 PBS, 0.05% NaN ₃ , 40% Glycerol.
Storage	Store at -20°C

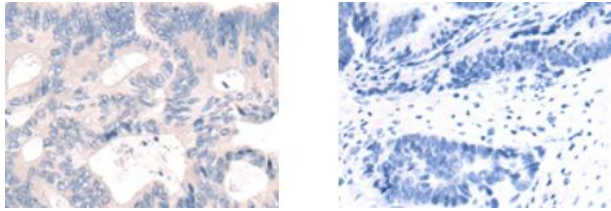
Application Details

Western blotting: 1:500-1:2000 Immunofluorescence: 1:50-1:200

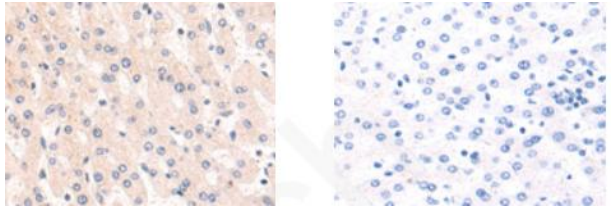
Images



Gel: 8%SDS-PAGE
Lysate: 40 ug
Lane: Mouse brain tissue lysate
Primary antibody: (SIGLEC15 Antibody) at dilution 1/800
Secondary antibody:(HRP-conjugated Goat anti rabbit IgG) at 1/5000 dilution
Exposure time: 5 minutes



The image on the left is immunohistochemistry of paraffinembedded Human colorectal cancer tissue using (SIGLEC15 Antibody) at dilution 1/50, on the right is treated with synthetic peptide. (Original magnification: 200)



The image on the left is immunohistochemistry of paraffinembedded Human liver cancer tissue using (SIGLEC15 Antibody) at dilution 1/50, on the right is treated with synthetic peptide. (Original magnification: 200)

Background

Siglec-15 (sialic acid binding Ig-like lectin 15), also known as CD33L3, is a 328 amino acid single-pass type I membrane protein that contains one Ig-like C2-type domain and one Ig-like V-type domain. Expressed in dendritic and macrophage cells, Sinlec-15 interacts with DAP10 and DAP12 and binds to sialylated glycoproteins. The gene encoding Siglec-15 maps to human chromosome 18, which houses over 300 protein-coding genes and contains nearly 76 million bases.

Note: This product is for in vitro research use only