

## SLC24A3 Antibody

Catalog No: #37933

Orders: [order@signalwayantibody.com](mailto:order@signalwayantibody.com)Support: [tech@signalwayantibody.com](mailto:tech@signalwayantibody.com)

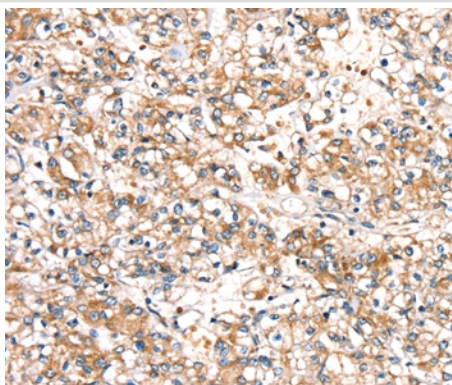
## Description

Product Name	SLC24A3 Antibody
Host Species	Rabbit
Clonality	Polyclonal
Purification	Antigen affinity purification.
Applications	IHC
Species Reactivity	Hu
Specificity	The antibody detects endogenous levels of total SLC24A3 protein.
Immunogen Type	Peptide
Immunogen Description	Synthetic peptide corresponding to a region derived from internal residues of human solute carrier family 24 (sodium/potassium/calcium exchanger), member 3
Target Name	SLC24A3
Other Names	NCKX3
Accession No.	Swiss-Prot#: Q9HC58NCBI Gene ID: 57419Gene Accssion: NP_065740/Q9HC58
Uniprot	Q9HC58
GeneID	57419;
Concentration	1.3mg/ml
Formulation	Rabbit IgG in pH7.4 PBS, 0.05% NaN <sub>3</sub> , 40% Glycerol.
Storage	Store at -20°C

## Application Details

Immunohistochemistry: 1:25-1:100

## Images



Immunohistochemical analysis of paraffin-embedded Human prostate cancer tissue using #37933 at dilution 1/20.

## Background

Plasma membrane sodium/calcium exchangers are an important component of intracellular calcium homeostasis and electrical conduction. Potassium-dependent sodium/calcium exchangers such as SLC24A3 are believed to transport 1 intracellular calcium and 1 potassium ion in exchange

for 4 extracellular sodium ions.

---

Note: This product is for in vitro research use only