

SLC25A12 Antibody

Catalog No: #37935

Orders: order@signalwayantibody.comSupport: tech@signalwayantibody.com

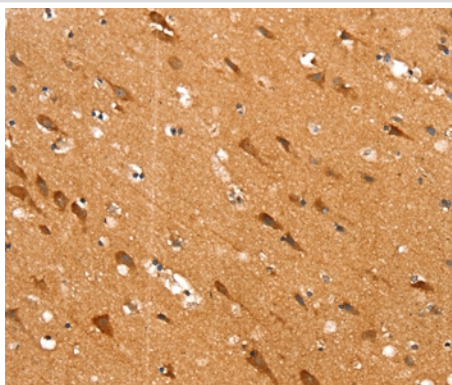
Description

Product Name	SLC25A12 Antibody
Host Species	Rabbit
Clonality	Polyclonal
Purification	Antigen affinity purification.
Applications	IHC
Species Reactivity	Hu
Specificity	The antibody detects endogenous levels of total SLC25A12 protein.
Immunogen Type	Peptide
Immunogen Description	Synthetic peptide corresponding to a region derived from internal residues of human solute carrier family 25 (aspartate/glutamate carrier), member 12
Target Name	SLC25A12
Other Names	AGC1; ARALAR
Accession No.	Swiss-Prot#: O75746NCBI Gene ID: 8604Gene Accssion: NP_003696/O75746
Uniprot	O75746
GeneID	8604;
Concentration	2.2mg/ml
Formulation	Rabbit IgG in pH7.4 PBS, 0.05% NaN ₃ , 40% Glycerol.
Storage	Store at -20°C

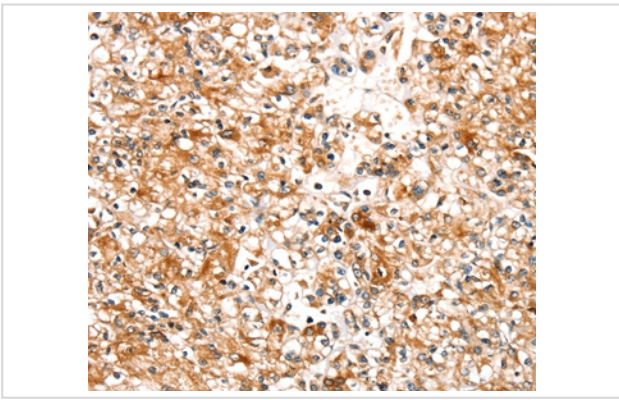
Application Details

Immunohistochemistry: 1:25-1:100

Images



Immunohistochemical analysis of paraffin-embedded Human brain tissue using #37935 at dilution 1/30.



Immunohistochemical analysis of paraffin-embedded Human prostate cancer tissue using #37935 at dilution 1/30.

Background

This gene encodes a calcium-binding mitochondrial carrier protein. The encoded protein localizes to the mitochondria and is involved in the exchange of aspartate for glutamate across the inner mitochondrial membrane. Polymorphisms in this gene may be associated with autism, and mutations in this gene may also be a cause of global cerebral hypomyelination. Alternatively spliced transcript variants have been observed for this gene.?

Note: This product is for in vitro research use only