

SLC25A38 Antibody

Catalog No: #37936

Orders: order@signalwayantibody.comSupport: tech@signalwayantibody.com

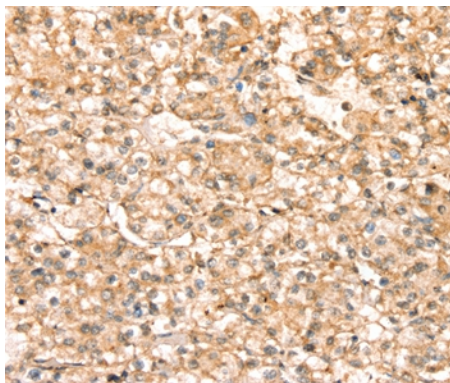
Description

Product Name	SLC25A38 Antibody
Host Species	Rabbit
Clonality	Polyclonal
Purification	Antigen affinity purification.
Applications	IHC
Species Reactivity	Hu
Specificity	The antibody detects endogenous levels of total SLC25A38 protein.
Immunogen Type	Peptide
Immunogen Description	Synthetic peptide corresponding to residues near the N terminal of human solute carrier family 25, member 38
Target Name	SLC25A38
Other Names	FLJ20551; FLJ22703; S2538; SLC25A38;
Accession No.	Swiss-Prot#: Q96DW6NCBI Gene ID: 54977Gene Accssion: NP_060345/Q96DW6
Uniprot	Q96DW6
GeneID	54977;
Concentration	1.2mg/ml
Formulation	Rabbit IgG in pH7.4 PBS, 0.05% NaN ₃ , 40% Glycerol.
Storage	Store at -20°C

Application Details

Immunohistochemistry: 1:25-1:100

Images



Immunohistochemical analysis of paraffin-embedded Human prostate cancer tissue using #37936 at dilution 1/20.

Background

This gene is a member of the mitochondrial carrier family. The encoded protein is required during erythropoiesis and is important for the biosynthesis of heme. Mutations in this gene are the cause of autosomal congenital sideroblastic anemia.

Note: This product is for in vitro research use only