

## SLC25A3 Antibody

Catalog No: #37937

Orders: [order@signalwayantibody.com](mailto:order@signalwayantibody.com)Support: [tech@signalwayantibody.com](mailto:tech@signalwayantibody.com)

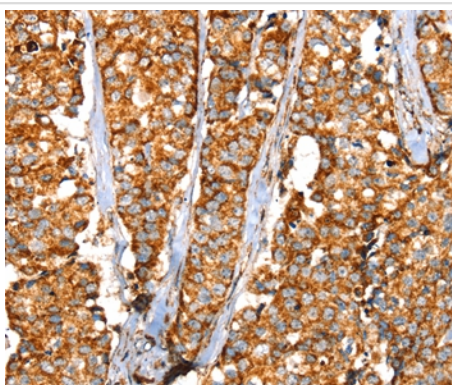
## Description

Product Name	SLC25A3 Antibody
Host Species	Rabbit
Clonality	Polyclonal
Purification	Antigen affinity purification.
Applications	IHC
Species Reactivity	Hu
Specificity	The antibody detects endogenous levels of total SLC25A3 protein.
Immunogen Type	Peptide
Immunogen Description	Synthetic peptide corresponding to residues near the C terminal of human solute carrier family 25 (mitochondrial carrier; phosphate carrier), member 3
Target Name	SLC25A3
Other Names	PHC; PTP; OK/SW-cl.48
Accession No.	Swiss-Prot#: Q00325NCBI Gene ID: 5250Gene Accssion: NP_005879/Q00325
Uniprot	Q00325
GeneID	5250;
Concentration	2.4mg/ml
Formulation	Rabbit IgG in pH7.4 PBS, 0.05% NaN <sub>3</sub> , 40% Glycerol.
Storage	Store at -20°C

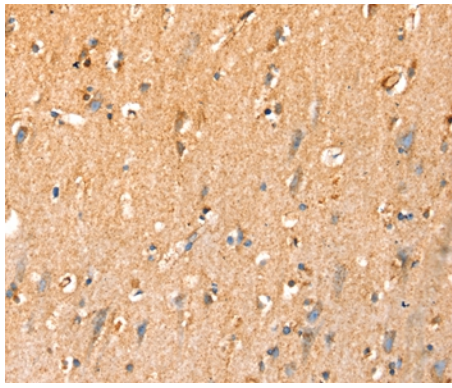
## Application Details

Immunohistochemistry: 1:25-1:100

## Images



Immunohistochemical analysis of paraffin-embedded Human breast cancer tissue using #37937 at dilution 1/35.



Immunohistochemical analysis of paraffin-embedded Human brain tissue using #37937 at dilution 1/35.

## Background

The protein encoded by this gene catalyzes the transport of phosphate into the mitochondrial matrix, either by proton cotransport or in exchange for hydroxyl ions. The protein contains three related segments arranged in tandem which are related to those found in other characterized members of the mitochondrial carrier family. Both the N-terminal and C-terminal regions of this protein protrude toward the cytosol.

Note: This product is for in vitro research use only