

SLC5A11 Antibody

Catalog No: #37947

Orders: order@signalwayantibody.comSupport: tech@signalwayantibody.com

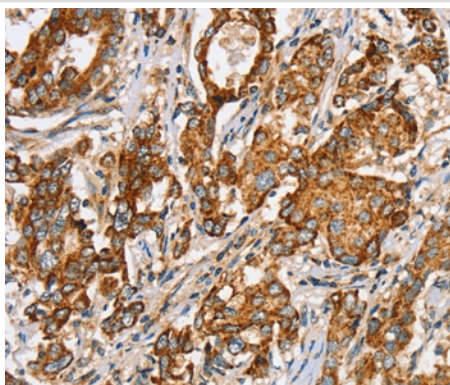
Description

Product Name	SLC5A11 Antibody
Host Species	Rabbit
Clonality	Polyclonal
Purification	Antigen affinity purification.
Applications	IHC
Species Reactivity	Hu Ms Rt
Specificity	The antibody detects endogenous levels of total SLC5A11 protein.
Immunogen Type	Peptide
Immunogen Description	Synthetic peptide corresponding to a region derived from internal residues of human solute carrier family 5 (sodium/inositol cotransporter), member 11
Target Name	SLC5A11
Other Names	KST1; RKST1; SGLT6; SMIT2
Accession No.	Swiss-Prot#: Q8WWX8NCBI Gene ID: 115584Gene Accssion: NP_443176/Q8WWX8
Uniprot	Q8WWX8
GeneID	115584;
Concentration	2.2mg/ml
Formulation	Rabbit IgG in pH7.4 PBS, 0.05% NaN ₃ , 40% Glycerol.
Storage	Store at -20°C

Application Details

Immunohistochemistry: 1:30-1:150

Images



Immunohistochemical analysis of paraffin-embedded Human liver cancer tissue using #37947 at dilution 1/35.

Background

Cotransporters, such as SLC5A11, represent a major class of proteins that make use of ion gradients to drive active transport for the cellular accumulation of nutrients, neurotransmitters, osmolytes, and ions Roll et al.

Note: This product is for in vitro research use only