

SLTM Antibody

Catalog No: #37953

Orders: order@signalwayantibody.comSupport: tech@signalwayantibody.com

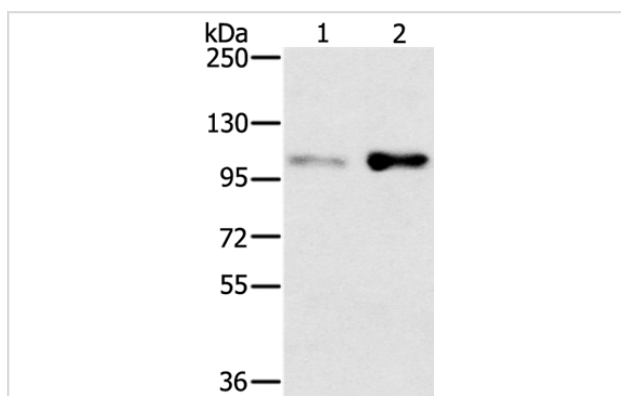
Description

Product Name	SLTM Antibody
Host Species	Rabbit
Clonality	Polyclonal
Purification	Antigen affinity purification.
Applications	WB
Species Reactivity	Hu
Specificity	The antibody detects endogenous levels of total SLTM protein.
Immunogen Type	Peptide
Immunogen Description	Synthetic peptide corresponding to residues near the N terminal of human SAFB-like, transcription modulator
Target Name	SLTM
Other Names	Met
Accession No.	Swiss-Prot#: Q9NWH9NCBI Gene ID: 79811Gene Accssion: NP_079031/Q9NWH9
Uniprot	Q9NWH9
GeneID	79811;
SDS-PAGE MW	117kd
Concentration	2.2mg/ml
Formulation	Rabbit IgG in pH7.4 PBS, 0.05% NaN ₃ , 40% Glycerol.
Storage	Store at -20°C

Application Details

Western blotting: 1:500-1:2000

Images



Gel: 6%SDS-PAGE
 Lysates (from left to right): HT-29 and 293T cell
 Amount of lysate: 40ug per lane
 Primary antibody: 1/400 dilution
 Secondary antibody dilution: 1/8000
 Exposure time: 2 minutes

Background

SLTM (SAFB-like, transcription modulator), also known as MET (modulator of estrogen-induced transcription), is a 1,034 amino acid protein that localizes to punctate structures within the nucleus and contains one SAP domain and one RNA recognition motif. When expressed at high levels,

SLTM functions to inhibit transcription and may, ultimately, lead to apoptosis. Multiple isoforms of SLTM exist due to alternative splicing events. The gene encoding SLTM maps to human chromosome 15, which houses over 700 genes and comprises nearly 3% of the human genome.?

Note: This product is for in vitro research use only