

SMARCA2 Antibody

Catalog No: #37955

Orders: order@signalwayantibody.comSupport: tech@signalwayantibody.com

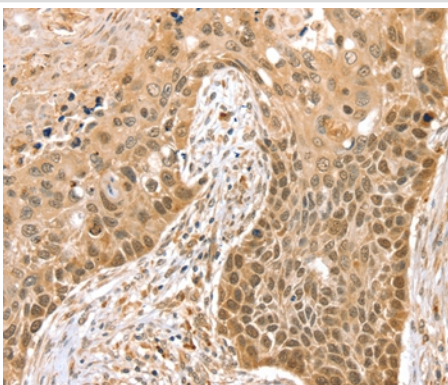
Description

Product Name	SMARCA2 Antibody
Host Species	Rabbit
Clonality	Polyclonal
Purification	Antigen affinity purification.
Applications	IHC
Species Reactivity	Hu
Specificity	The antibody detects endogenous levels of total SMARCA2 protein.
Immunogen Type	Peptide
Immunogen Description	Synthetic peptide corresponding to a region derived from internal residues of human SWI/SNF related, matrix associated, actin dependent regulator of chromatin, subfamily a, member 2
Target Name	SMARCA2
Other Names	BRM; SNF2; SWI2; hBRM; NCBRS; Sth1p; BAF190; SNF2L2; SNF2LA; hSNF2a
Accession No.	Swiss-Prot#: P51531NCBI Gene ID: 6595Gene Accssion: NP_003061/P51531
Uniprot	P51531
GeneID	6595;
Concentration	1.4mg/ml
Formulation	Rabbit IgG in pH7.4 PBS, 0.05% NaN ₃ , 40% Glycerol.
Storage	Store at -20°C

Application Details

Immunohistochemistry: 1:25-1:100

Images



Immunohistochemical analysis of paraffin-embedded Human esophagus cancer tissue using #37955 at dilution 1/20.

Background

The protein encoded by this gene is a member of the SWI/SNF family of proteins and is highly similar to the brahma protein of *Drosophila*. Members of this family have helicase and ATPase activities and are thought to regulate transcription of certain genes by altering the chromatin structure around

those genes. The encoded protein is part of the large ATP-dependent chromatin remodeling complex SNF/SWI, which is required for transcriptional activation of genes normally repressed by chromatin.?

Note: This product is for in vitro research use only