

SMC4 Antibody

Catalog No: #37957

Orders: order@signalwayantibody.com

Support: tech@signalwayantibody.com

Description

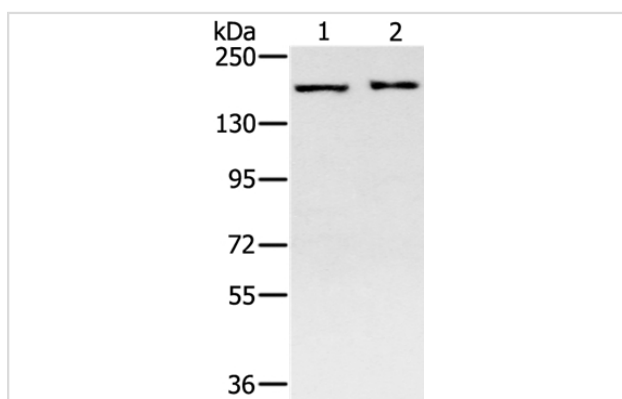
Product Name	SMC4 Antibody
Host Species	Rabbit
Clonality	Polyclonal
Purification	Antigen affinity purification.
Applications	WB IHC
Species Reactivity	Hu
Specificity	The antibody detects endogenous levels of total SMC4 protein.
Immunogen Type	Peptide
Immunogen Description	Synthetic peptide corresponding to a region derived from internal residues of human structural maintenance of chromosomes 4
Target Name	SMC4
Other Names	CAPC; CAP-C; SMC-4; SMC4L1; hCAP-C
Accession No.	Swiss-Prot#: Q9NTJ3NCBI Gene ID: 10051Gene Accssion: NP_005487/Q9NTJ3
Uniprot	Q9NTJ3
GeneID	10051;
SDS-PAGE MW	147kd
Concentration	2.2mg/ml
Formulation	Rabbit IgG in pH7.4 PBS, 0.05% NaN ₃ , 40% Glycerol.
Storage	Store at -20°C

Application Details

Western blotting: 1:200-1:1000

Immunohistochemistry: 1:25-1:100

Images



Gel: 6%SDS-PAGE

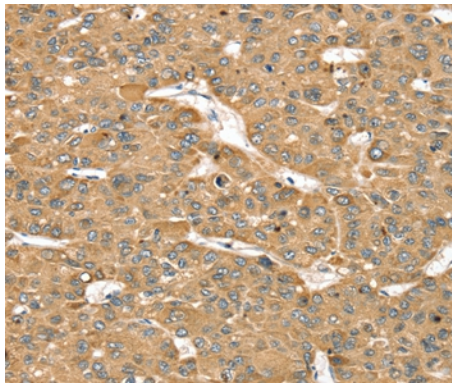
Lysates (from left to right): 231 and K562 cell

Amount of lysate: 40ug per lane

Primary antibody: 1/400 dilution

Secondary antibody dilution: 1/8000

Exposure time: 4 minutes



Immunohistochemical analysis of paraffin-embedded Human liver cancer tissue using #37957 at dilution 1/35.

Background

Members of the structural maintenance of chromosomes, or SMC, family (e.g., SMC1A; MIM 300040) are critical for mitotic chromosome condensation in frogs and for DNA repair in mammals.

Note: This product is for in vitro research use only