

## SMN1 Antibody

Catalog No: #37959

Orders: [order@signalwayantibody.com](mailto:order@signalwayantibody.com)Support: [tech@signalwayantibody.com](mailto:tech@signalwayantibody.com)

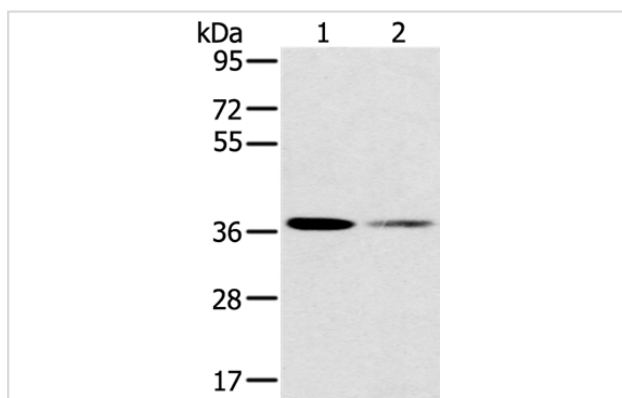
## Description

Product Name	SMN1 Antibody
Host Species	Rabbit
Clonality	Polyclonal
Purification	Antigen affinity purification.
Applications	WB
Species Reactivity	Hu
Specificity	The antibody detects endogenous levels of total SMN1 protein.
Immunogen Type	Peptide
Immunogen Description	Synthetic peptide corresponding to residues near the C terminal of human survival of motor neuron 1, telomeric
Target Name	SMN1
Other Names	SMA; SMN; SMA1; SMA2; SMA3; SMA4; SMA@; SMNT; BCD541; GEMIN1; TDRD16A; T-BCD541
Accession No.	Swiss-Prot#: Q16637NCBI Gene ID: 6606Gene Accssion: NP_000335/Q16637
Uniprot	Q16637
GeneID	6606;6607;
SDS-PAGE MW	32kd
Concentration	1.5mg/ml
Formulation	Rabbit IgG in pH7.4 PBS, 0.05% NaN <sub>3</sub> , 40% Glycerol.
Storage	Store at -20°C

## Application Details

Western blotting: 1:500-1:2000

## Images



Gel: 8%SDS-PAGE  
 Lysates (from left to right): 293T and Raji cell  
 Amount of lysate: 40ug per lane  
 Primary antibody: 1/200 dilution  
 Secondary antibody dilution: 1/8000  
 Exposure time: 2 minutes

## Background

This gene is part of a 500 kb inverted duplication on chromosome 5q13. This duplicated region contains at least four genes and repetitive elements

which make it prone to rearrangements and deletions. The repetitiveness and complexity of the sequence have also caused difficulty in determining the organization of this genomic region. The telomeric and centromeric copies of this gene are nearly identical and encode the same protein.

---

Note: This product is for in vitro research use only