

SMOC2 Antibody

Catalog No: #37960

Orders: order@signalwayantibody.comSupport: tech@signalwayantibody.com

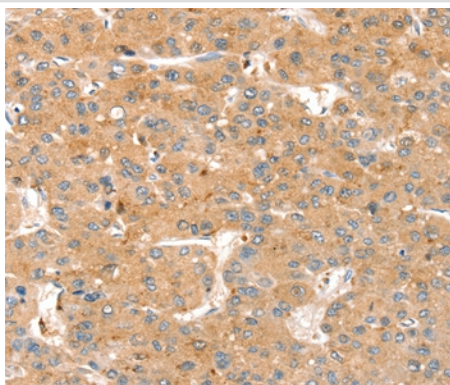
Description

Product Name	SMOC2 Antibody
Host Species	Rabbit
Clonality	Polyclonal
Purification	Antigen affinity purification.
Applications	IHC
Species Reactivity	Hu
Specificity	The antibody detects endogenous levels of total SMOC2 protein.
Immunogen Type	Peptide
Immunogen Description	Synthetic peptide corresponding to residues near the C terminal of human SPARC related modular calcium binding 2
Target Name	SMOC2
Other Names	DTDP1; SMAP2; MST117; MSTP117; MSTP140; bA37D8.1; bA270C4A.1; dJ421D16.1
Accession No.	Swiss-Prot#: Q9H3U7NCBI Gene ID: 64094Gene Accssion: NP_001159884/Q9H3U7
Uniprot	Q9H3U7
GeneID	64094;
Concentration	2.3mg/ml
Formulation	Rabbit IgG in pH7.4 PBS, 0.05% NaN ₃ , 40% Glycerol.
Storage	Store at -20°C

Application Details

Immunohistochemistry: 1:25-1:100

Images



Immunohistochemical analysis of paraffin-embedded Human liver cancer tissue using #37960 at dilution 1/35.

Background

This gene encodes a member of the SPARC family (secreted protein acidic and rich in cysteine/osteonectin/BM-40), which are highly expressed during embryogenesis and wound healing. The gene product is a matricellular protein which promotes matrix assembly and can stimulate endothelial

cell proliferation and migration, as well as angiogenic activity. Associated with pulmonary function, this secretory gene product contains a Kazal domain, two thymoglobulin type-1 domains, and two EF-hand calcium-binding domains.

Note: This product is for in vitro research use only