

## Collagen III Mouse Monoclonal Antibody(Q76)

Catalog No: #38065

Orders: order@signalwayantibody.com

Support: tech@signalwayantibody.com

## Description

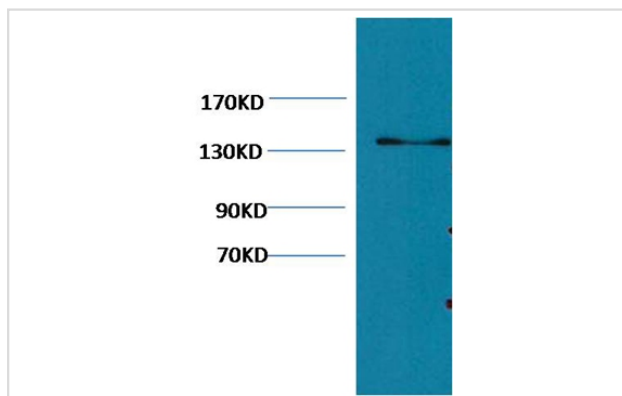
Product Name	Collagen III Mouse Monoclonal Antibody(Q76)
Host Species	Mouse
Clonality	Monoclonal
Clone No.	Q76
Purification	Affinity purification using immunogen.
Applications	WB,IHC,IF
Species Reactivity	Hu Rt Ms
Specificity	Antibody detects endogenous Collagen III protein.
Target Name	Collagen III
Other Names	CO3A1; COL3A1; Collagen alpha-1(III) chain; collagen, fetal;
Accession No.	Swiss-Prot#:P02461
Uniprot	P02461
GeneID	1281;
SDS-PAGE MW	138kd
Concentration	1.0mg/ml
Formulation	Mouse IgG1 in phosphate buffered saline (without Mg2+ and Ca2+), pH 7.4, 150mM NaCl, 0.02% sodium azide and 50% glycerol.
Storage	Store at -20°C

## Application Details

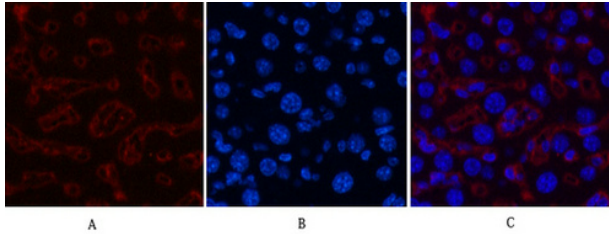
WB dilution: 1:1000

IHC dilution:1:50-300IF dilution:1:200

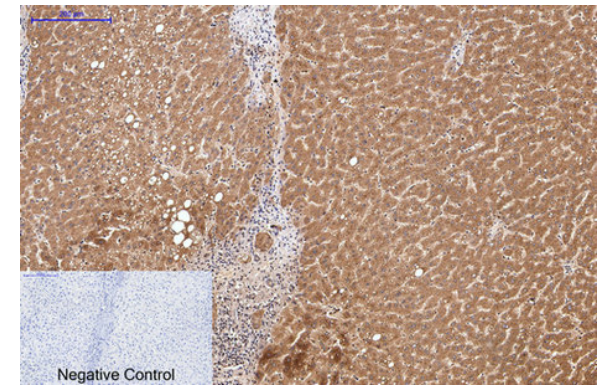
## Images



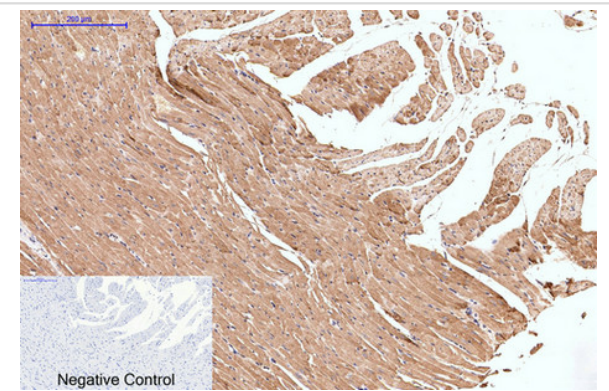
Western blot analysis of Hela cells, using #38065 diluted at 1:1,000.



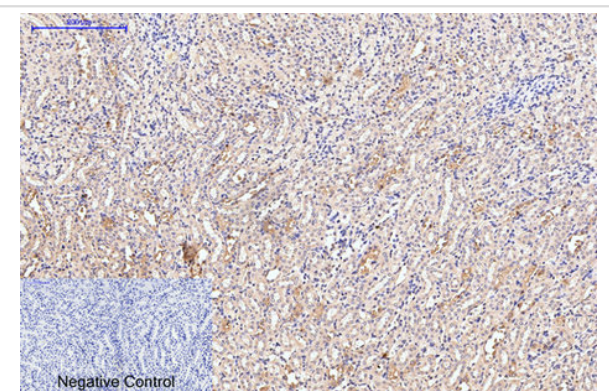
Immunofluorescence analysis of Mouse-liver tissue. 1, Collagen III Monoclonal Antibody(Q76)(red) was diluted at 1:200(4C, overnight). 2, Cy3 labeled Secondary antibody was diluted at 1:300(room temperature, 50min). 3, Picture B: DAPI(blue) 10min. Picture A: Target. Picture B: DAPI. Picture C: merge of A+B



Immunohistochemical analysis of paraffin-embedded Human-liver tissue. 1, Collagen III Monoclonal Antibody(Q76) was diluted at 1:200(4C, overnight). 2, Sodium citrate pH 6.0 was used for antibody retrieval(>98C, 20min). 3, Secondary antibody was diluted at 1:200(room temperature, 30min). Negative control was used by secondary antibody only.



Immunohistochemical analysis of paraffin-embedded Rat-heart tissue. 1, Collagen III Monoclonal Antibody(Q76) was diluted at 1:200(4C, overnight). 2, Sodium citrate pH 6.0 was used for antibody retrieval(>98C, 20min). 3, Secondary antibody was diluted at 1:200(room temperature, 30min). Negative control was used by secondary antibody only.



Immunohistochemical analysis of paraffin-embedded Mouse-kidney tissue. 1, Collagen III Monoclonal Antibody(Q76) was diluted at 1:200(4C, overnight). 2, Sodium citrate pH 6.0 was used for antibody retrieval(>98C, 20min). 3, Secondary antibody was diluted at 1:200(room temperature, 30min). Negative control was used by secondary antibody only.

## Background

Collagen alpha-1(III) chain is a fibrillar collagen that is found in extensible connective tissues such as skin, lung, and the vascular system, frequently in association with type I collagen.

Note: This product is for in vitro research use only