

Cleaved PARP Mouse Monoclonal Antibody

Catalog No: #38068

Orders: order@signalwayantibody.com

Support: tech@signalwayantibody.com

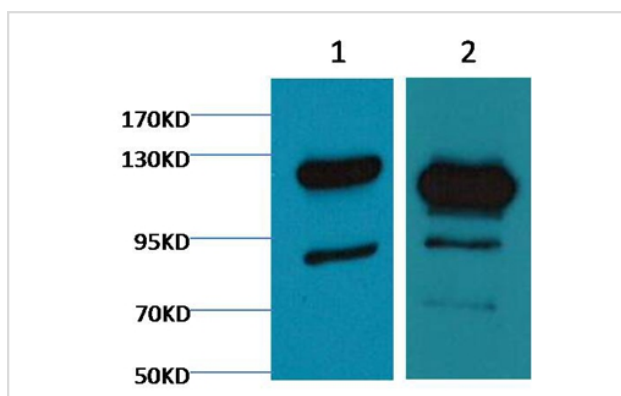
Description

Product Name	Cleaved PARP Mouse Monoclonal Antibody
Host Species	Mouse
Clonality	Monoclonal
Purification	Affinity purification using immunogen.
Applications	WB
Species Reactivity	Hu
Specificity	Antibody detects endogenous pro and active PARP protein.
Target Name	Cleaved PARP
Other Names	PARP1; ADPRT; PPOL; Poly [ADP-ribose] polymerase 1; PARP-1; ADP-ribosyltransferase diphtheria toxin-like 1; ARTD1; NAD(+) ADP-ribosyltransferase 1; ADPRT 1; Poly[ADP-ribose] synthase 1
Accession No.	Swiss-Prot#:P09874Gene ID:142
Uniprot	P09874
GeneID	142;
SDS-PAGE MW	116,89kd
Concentration	1.0mg/ml
Formulation	Mouse IgG1 in phosphate buffered saline (without Mg ²⁺ and Ca ²⁺), pH 7.4, 150mM NaCl, 0.02% sodium azide and 50% glycerol.
Storage	Store at -20°C

Application Details

Western blotting: 1:1000~1:3000

Images



Western blot analysis of 1) Jurkat ,2) Hela cells, using #38068 diluted at 1:2,000.

Background

Poly [ADP-ribose] polymerase 1 (PARP-1) also known as NAD⁺ ADP-ribosyltransferase 1 or poly[ADP-ribose] synthase 1 is an enzyme that in humans is encoded by the PARP1 gene. PARP1 has a role in repair of single-stranded DNA (ssDNA) breaks. Knocking down intracellular PARP1

levels with siRNA or inhibiting PARP1 activity with small molecules reduces repair of ssDNA breaks. In the absence of PARP1, when these breaks are encountered during DNA replication, the replication fork stalls, and double-strand DNA (dsDNA) breaks accumulate.

Note: This product is for in vitro research use only