

## eIF4A1 Mouse Monoclonal Antibody

Catalog No: #38072

Orders: order@signalwayantibody.com

Support: tech@signalwayantibody.com

## Description

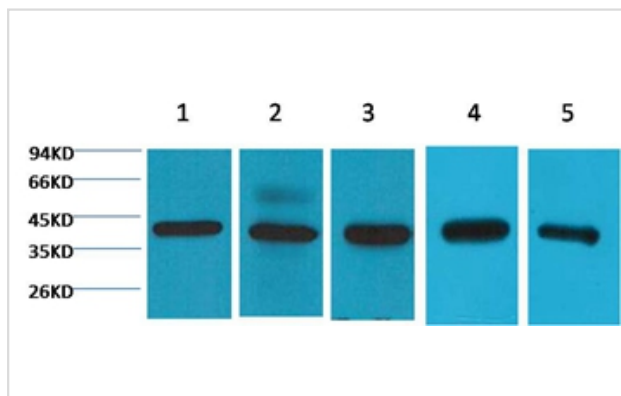
|                    |  |
|--------------------|--|
| Product Name       | eIF4A1 Mouse Monoclonal Antibody   |
| Host Species       | Mouse  |
| Clonality          | Monoclonal   |
| Purification       | Affinity purification using immunogen.   |
| Applications       | WB,IHC,IF  |
| Species Reactivity | Hu Rt Ms   |
| Specificity        | Antibody detects endogenous eIF4A1 protein.  |
| Target Name        | eIF4A1   |
| Other Names        | ATP-dependent RNA helicase eIF4A-1; DDX2A; EIF-4A; eIF-4A-I; EIF4A; eIF4A-I; EIF4A1; Eukaryotic initiation factor 4A-I                             |
| Accession No.      | Swiss-Prot#:P60842   |
| Uniprot            | P60842   |
| GeneID             | 1973;  |
| SDS-PAGE MW        | 48kd   |
| Concentration      | 1.0mg/ml   |
| Formulation        | Mouse IgG1 in phosphate buffered saline (without Mg <sup>2+</sup> and Ca <sup>2+</sup> ), pH 7.4, 150mM NaCl, 0.02% sodium azide and 50% glycerol. |
| Storage            | Store at -20°C   |

## Application Details

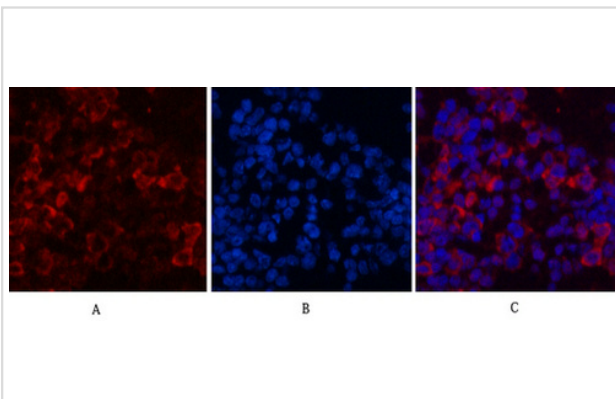
WB dilution: 1:1000~1:3000

IHC dilution:1:50-300IF dilution:1:100-200

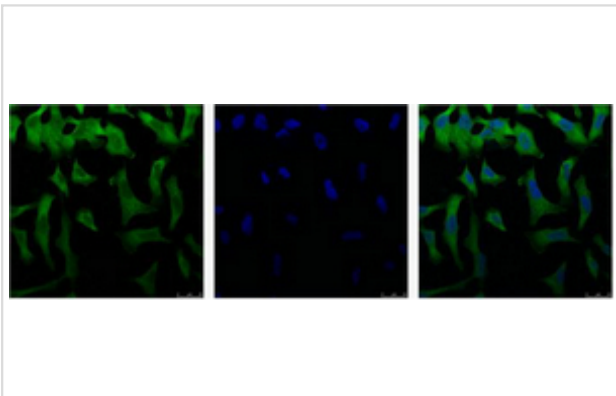
## Images



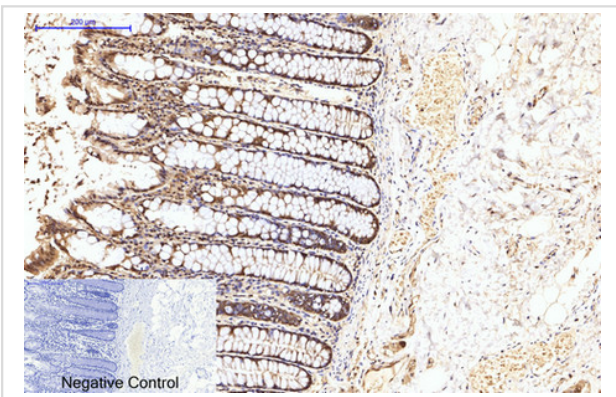
Western blot analysis of 1) 293T ,2) Hela, 3) HepG2, 4) Mouse Brain tissue, 5) Rat Brain tissue, using #38072 diluted at 1:2,000.



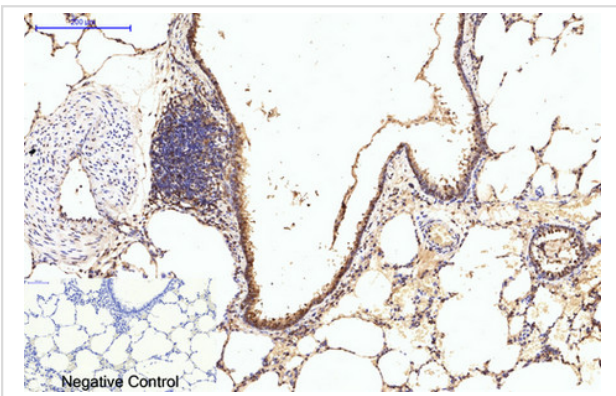
Immunofluorescence analysis of Mouse-spleen tissue. 1,eIF4A1 Monoclonal Antibody(M8)(red) was diluted at 1:200(4C,overnight). 2, Cy3 labled Secondary antibody was diluted at 1:300(room temperature, 50min).3, Picture B: DAPI(blue) 10min. Picture A:Target. Picture B: DAPI. Picture C: merge of A+B



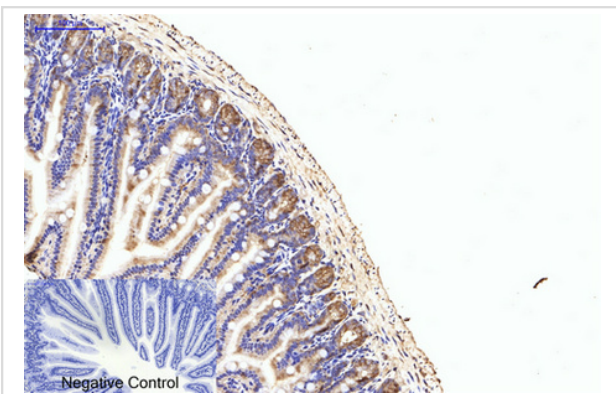
IF analysis of Hela with antibody (Left) and DAPI (Right) diluted at 1:100.



Immunohistochemical analysis of paraffin-embedded Human-colon-cancer tissue. 1,eIF4A1 Monoclonal Antibody(M8) was diluted at 1:200(4C,overnight). 2, Sodium citrate pH 6.0 was used for antibody retrieval(>98C,20min). 3,Secondary antibody was diluted at 1:200(room temperature, 30min). Negative control was used by secondary antibody only.



Immunohistochemical analysis of paraffin-embedded Rat-lung tissue. 1,eIF4A1 Monoclonal Antibody(M8) was diluted at 1:200(4C,overnight). 2, Sodium citrate pH 6.0 was used for antibody retrieval(>98C,20min). 3,Secondary antibody was diluted at 1:200(room temperature, 30min). Negative control was used by secondary antibody only.



Immunohistochemical analysis of paraffin-embedded Mouse-colon tissue. 1,eIF4A1 Monoclonal Antibody(M8) was diluted at 1:200(4C,overnight). 2, Sodium citrate pH 6.0 was used for antibody retrieval(>98C,20min). 3,Secondary antibody was diluted at 1:200(room temperature, 30min). Negative control was used by secondary antibody only.

## Background

---

The eukaryotic initiation factor-4A (eIF4A) family consists of 3 closely related proteins EIF4A1, EIF4A2, and EIF4A3. These factors are required for the binding of mRNA to 40S ribosomal subunits. Eukaryotic initiation factor (eIF) complex 2 forms a ternary complex with GTP and the initiator Met-tRNA<sup>B</sup>C. This process is regulated by guanine nucleotide exchange and phosphorylation and serves as the main regulatory element of the bottleneck of protein expression.

---

Note: This product is for in vitro research use only