

Cleaved PARP Mouse Monoclonal Antibody

Catalog No: #38076

Orders: order@signalwayantibody.comSupport: tech@signalwayantibody.com

Description

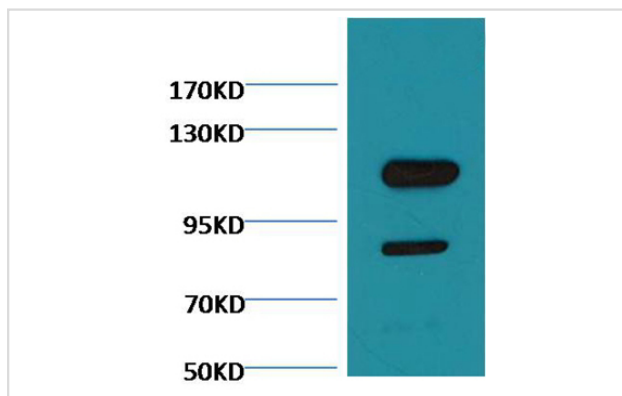
Product Name	Cleaved PARP Mouse Monoclonal Antibody
Host Species	Mouse
Clonality	Monoclonal
Purification	Affinity purification using immunogen.
Applications	WB,IHC,IF
Species Reactivity	Hu
Specificity	Antibody detects endogenous pro and active PARP protein.
Target Name	Cleaved PARP
Other Names	Apopain; CASP-3; CASP3; caspase 3, apoptosis-related cysteine peptidase; caspase 3, apoptosis-related cysteine protease; Caspase-3; Caspase-3 subunit p12
Accession No.	Swiss-Prot#:P42574
Uniprot	P42574
GeneID	836;
SDS-PAGE MW	89kd
Concentration	1.0mg/ml
Formulation	Mouse IgG1 in phosphate buffered saline (without Mg ²⁺ and Ca ²⁺), pH 7.4, 150mM NaCl, 0.02% sodium azide and 50% glycerol.
Storage	Store at -20°C

Application Details

WB dilution: 1:2000~1:5000

IHC dilution:1:50-300IF dilution:1:50-200

Images



Western blot analysis of Jurkat, using #38076 diluted at 1:3,000.

Background

Poly [ADP-ribose] polymerase 1 (PARP-1) also known as NAD⁺ ADP-ribosyltransferase 1 or poly[ADP-ribose] synthase 1 is an enzyme that in

humans is encoded by the PARP1 gene. PARP1 has a role in repair of single-stranded DNA (ssDNA) breaks. Knocking down intracellular PARP1 levels with siRNA or inhibiting PARP1 activity with small molecules reduces repair of ssDNA breaks. In the absence of PARP1, when these breaks are encountered during DNA replication, the replication fork stalls, and double-strand DNA (dsDNA) breaks accumulate.

Note: This product is for in vitro research use only