

α Skeletal Muslce Actin Mouse Monoclonal Antibody(4B11)

Catalog No: #38090

Orders: order@signalwayantibody.comSupport: tech@signalwayantibody.com

Description

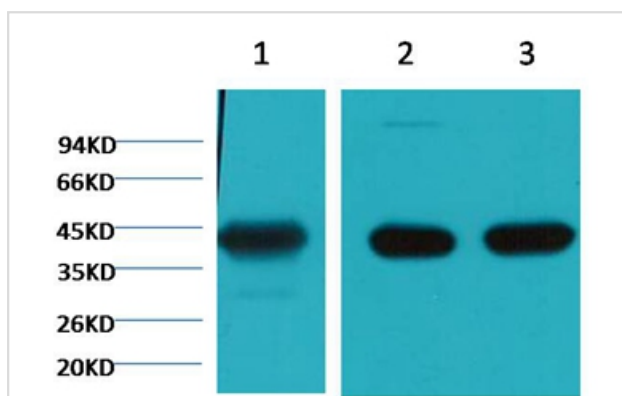
Product Name	α Skeletal Muslce Actin Mouse Monoclonal Antibody(4B11)
Host Species	Mouse
Clonality	Monoclonal
Clone No.	4B11
Purification	Affinity purification using immunogen.
Applications	WB,IHC,IF
Species Reactivity	Hu Rt Ms
Specificity	Antibody detects endogenous α Skeletal Muscle Actin protein.
Target Name	α Skeletal Muslce Actin
Other Names	ACTA antibody, ACTA1 antibody, ACTC antibody, ACTC1 antibody, Actin alpha cardiac muscle antibody, ACTS antibody, Alpha actin 1 antibody, Cardiac muscle alpha actin 1 antibody, Skeletal muscle alpha actin 1 antibody
Accession No.	Swiss-Prot#:P68133
Uniprot	P68133
GeneID	58;
SDS-PAGE MW	42kd
Concentration	1.0mg/ml
Formulation	Mouse IgG1 in phosphate buffered saline (without Mg ²⁺ and Ca ²⁺), pH 7.4, 150mM NaCl, 0.02% sodium azide and 50% glycerol.
Storage	Store at -20°C

Application Details

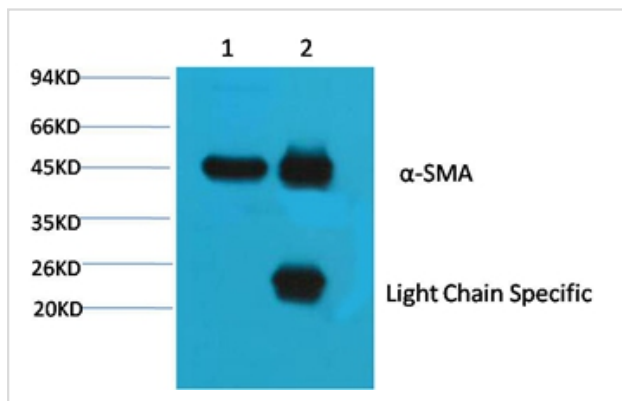
WB dilution: 1:5000~1:10000

IHC dilution:1:50-300

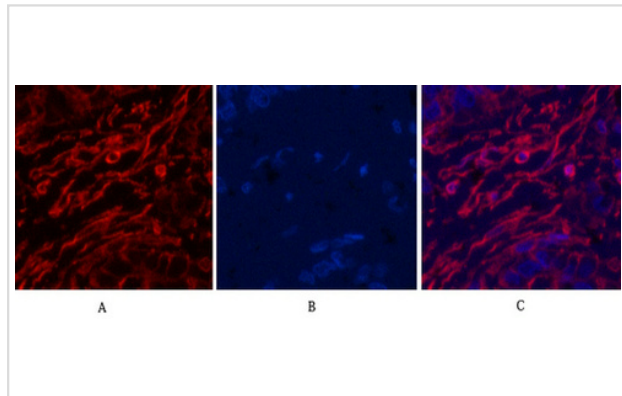
Images



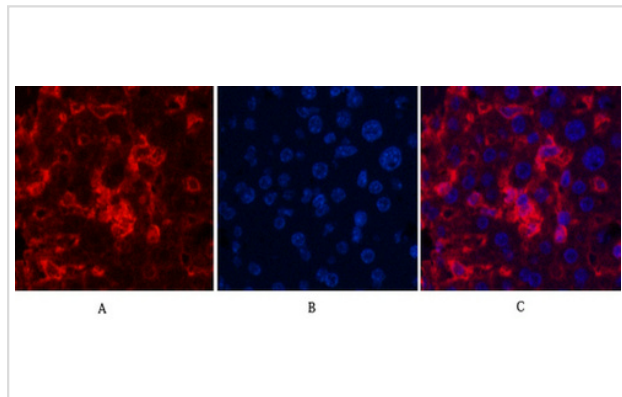
Western blot analysis of 1) Hela, 2) Mouse Brain tissue, 3) Rat Brain tissue, using #38090 diluted at 1:20,000.



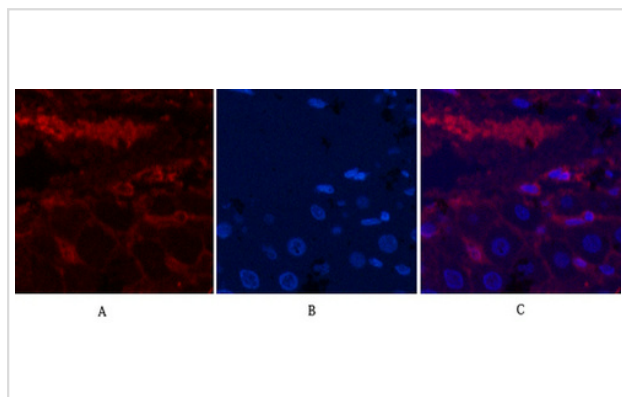
1B'B'Input: Mouse Brain Tissue Lysate
 2B'B'IP product: IP dilute 1:200
 Western blot analysis: primary antibody: #38090 1:10,000
 Secondary antibody: Goat anti-Mouse IgG, Light chain specific, 1:5,000



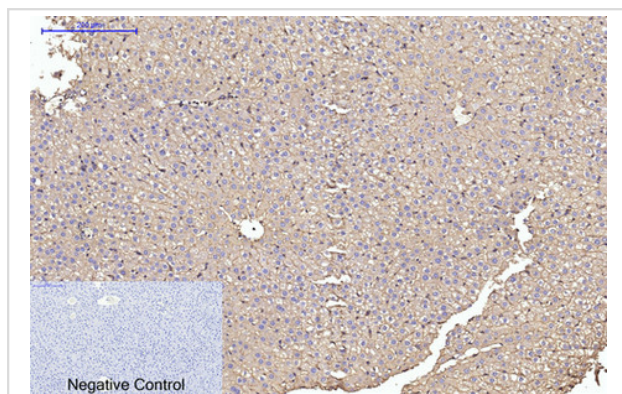
Immunofluorescence analysis of Human-liver-cancer tissue. 1, skeletal muscle actin Monoclonal Antibody(4B11)(red) was diluted at 1:200(4C,overnight). 2, Cy3 labeled Secondary antibody was diluted at 1:300(room temperature, 50min).3, Picture B: DAPI(blue) 10min. Picture A:Target. Picture B: DAPI. Picture C: merge of A+B



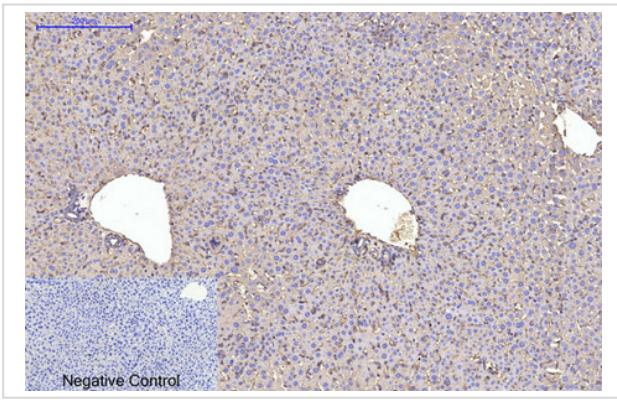
Immunofluorescence analysis of Mouse-liver tissue. 1, skeletal muscle actin Monoclonal Antibody(4B11)(red) was diluted at 1:200(4C,overnight). 2, Cy3 labeled Secondary antibody was diluted at 1:300(room temperature, 50min).3, Picture B: DAPI(blue) 10min. Picture A:Target. Picture B: DAPI. Picture C: merge of A+B



Immunofluorescence analysis of Rat-liver tissue. 1, skeletal muscle actin Monoclonal Antibody(4B11)(red) was diluted at 1:200(4C,overnight). 2, Cy3 labeled Secondary antibody was diluted at 1:300(room temperature, 50min).3, Picture B: DAPI(blue) 10min. Picture A:Target. Picture B: DAPI. Picture C: merge of A+B



Immunohistochemical analysis of paraffin-embedded Rat-liver tissue. 1, skeletal muscle actin Monoclonal Antibody(4B11) was diluted at 1:200(4C,overnight). 2, Sodium citrate pH 6.0 was used for antibody retrieval(>98C,20min). 3,Secondary antibody was diluted at 1:200(room temperature, 30min). Negative control was used by secondary antibody only.



Immunohistochemical analysis of paraffin-embedded Mouse-liver tissue. 1, skeletal muscle actin Monoclonal Antibody(4B11) was diluted at 1:200(4C,overnight). 2, Sodium citrate pH 6.0 was used for antibody retrieval(>98C,20min). 3,Secondary antibody was diluted at 1:200(room tempeRature, 30min). Negative control was used by secondary antibody only.

Background

Actin, alpha skeletal muscle is a protein that in humans is encoded by the ACTA1 gene. Actin alpha 1 which is expressed in skeletal muscle is one of six different actin isoforms which have been identified. Actins are highly conserved proteins that are involved in cell motility, structure and integrity. Alpha actins are a major constituent of the contractile apparatus.

Note: This product is for in vitro research use only