

Histone H2B Mouse Monoclonal Antibody

Catalog No: #38098

Orders: order@signalwayantibody.com

Support: tech@signalwayantibody.com

Description

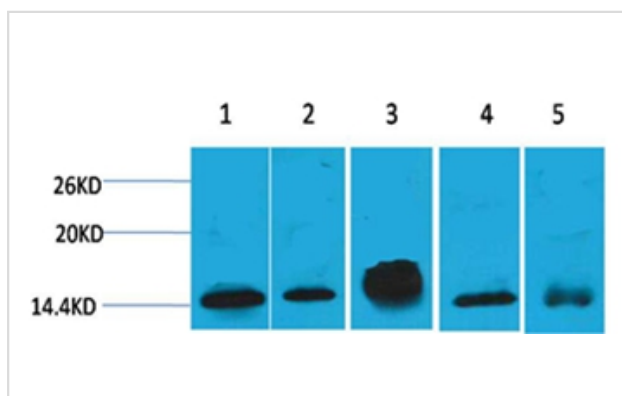
| | |
|--------------------|--|
| Product Name | Histone H2B Mouse Monoclonal Antibody |
| Host Species | Mouse |
| Clonality | Monoclonal |
| Purification | Affinity purification using immunogen. |
| Applications | WB,IF |
| Species Reactivity | Hu Rt Ms |
| Specificity | The Histone H2B antibody can detects endogenous Histone H2B protein. |
| Target Name | Histone H2B |
| Other Names | H2B GL105 antibody, H2B.1 antibody, Histone H2B type 1B antibody, HIST1H2BB antibody |
| Accession No. | Swiss-Prot#:P33778 |
| Uniprot | P33778 |
| GeneID | 3018; |
| SDS-PAGE MW | 14kd |
| Concentration | 1.0mg/ml |
| Formulation | PBS, pH 7.4, containing 0.02% sodium azide as Preservative and 50% Glycerol. |
| Storage | Store at -20°C |

Application Details

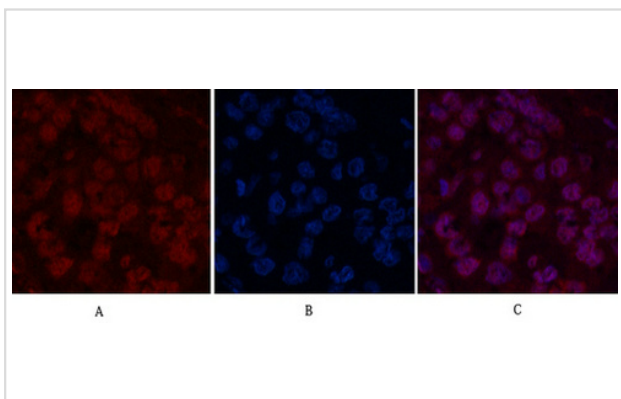
WB dilution: 1:1000~1:3000

IF dilution:1:200

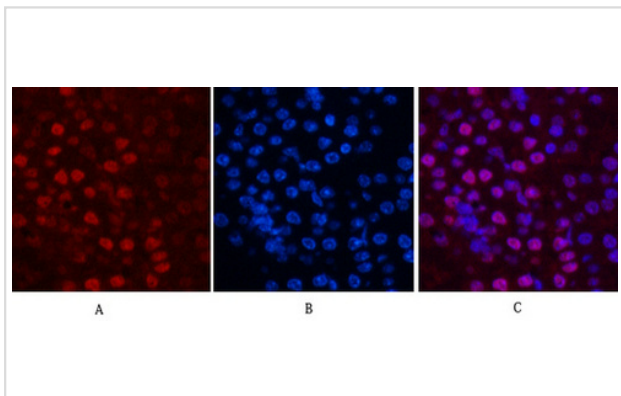
Images



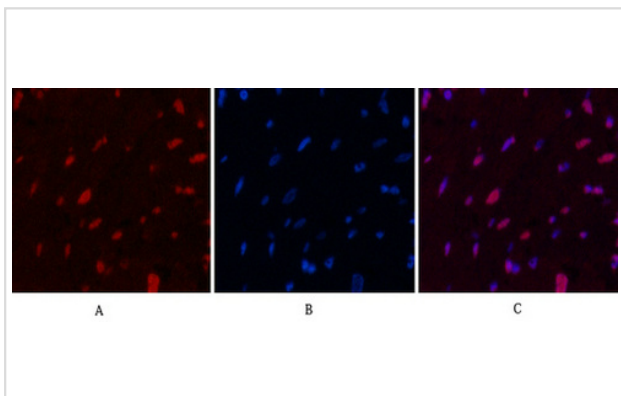
Western blot analysis of 1) HeLa, 2)3T3 , 3) Raw264.7, 4) Rat Brain, 5) Rat Kidney, using #38098 diluted at 1:2,000.



Immunofluorescence analysis of Human-liver-cancer tissue. 1, Histone H2B Monoclonal Antibody(Mix)(red) was diluted at 1:200(4C, overnight). 2, Cy3 labeled Secondary antibody was diluted at 1:300(room temperature, 50min). 3, Picture B: DAPI(blue) 10min. Picture A: Target. Picture B: DAPI. Picture C: merge of A+B



Immunofluorescence analysis of Mouse-kidney tissue. 1, Histone H2B Monoclonal Antibody(Mix)(red) was diluted at 1:200(4C, overnight). 2, Cy3 labeled Secondary antibody was diluted at 1:300(room temperature, 50min). 3, Picture B: DAPI(blue) 10min. Picture A: Target. Picture B: DAPI. Picture C: merge of A+B



Immunofluorescence analysis of Rat-heart tissue. 1, Histone H2B Monoclonal Antibody(Mix)(red) was diluted at 1:200(4C, overnight). 2, Cy3 labeled Secondary antibody was diluted at 1:300(room temperature, 50min). 3, Picture B: DAPI(blue) 10min. Picture A: Target. Picture B: DAPI. Picture C: merge of A+B

Background

Histone H2B is one of the 5 main histone proteins involved in the structure of chromatin in eukaryotic cells.

Note: This product is for in vitro research use only