

EGFR Mouse Monoclonal Antibody

Catalog No: #37996

Orders: order@signalwayantibody.comSupport: tech@signalwayantibody.com

Description

Product Name	EGFR Mouse Monoclonal Antibody
Host Species	Mouse
Clonality	Monoclonal
Purification	Affinity purification using immunogen.
Applications	WB,IHC,IF
Species Reactivity	Hu
Specificity	The EGFR Mouse Monoclonal antibody detects endogenous EGFR proteins.
Target Name	EGFR
Other Names	Receptor tyrosine-protein kinase ErbB-1; ERBB1
Accession No.	Swiss-Prot#:P00533
Uniprot	P00533
GeneID	1956;
SDS-PAGE MW	170kd
Concentration	1.0mg/ml
Formulation	Mouse IgG1 in phosphate buffered saline (without Mg2+ and Ca2+), pH 7.4, 150mM NaCl, 0.02% sodium azide and 50% glycerol.
Storage	Store at -20°C

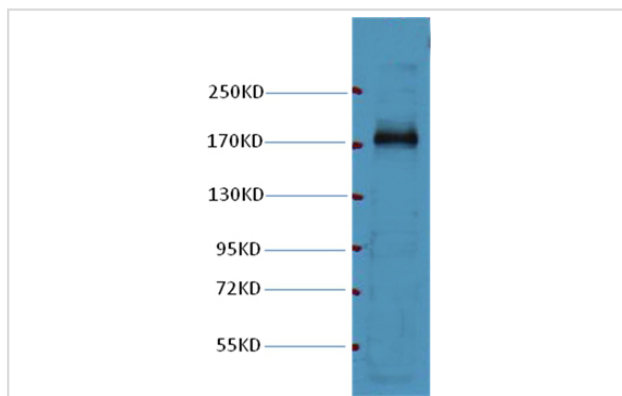
Application Details

WB dilution: 1:1000

IF dilution:1:100-200

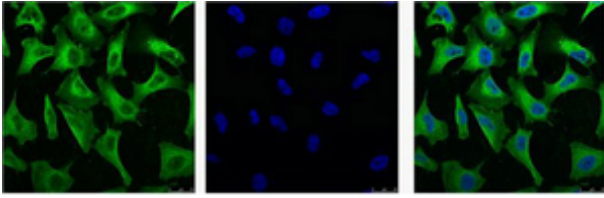
IHC 1:200-1000

Images



Western blot analysis of HeLa cell lysate, using #37996 diluted at 1:1,000.

IF analysis of Hela with antibody (Left) and DAPI (Right) diluted at 1:100.



Background

The epidermal growth factor receptor (EGFR; ErbB-1; HER1 in humans) is the cell-surface receptor for members of the epidermal growth factor family (EGF-family) of extracellular protein ligands. Known ligands include EGF, TGFA/TGF-alpha, amphiregulin, epigen/EPGN, BTC/betacellulin, epiregulin/EREG and HBEGF/heparin-binding EGF. Ligand binding triggers receptor homo- and/or heterodimerization and autophosphorylation on key cytoplasmic residues. The phosphorylated receptor recruits adapter proteins like GRB2 which in turn activates complex downstream signaling cascades.

Note: This product is for in vitro research use only