

## ErbB-2/HER-2 Mouse Monoclonal Antibody

Catalog No: #37997

Orders: [order@signalwayantibody.com](mailto:order@signalwayantibody.com)Support: [tech@signalwayantibody.com](mailto:tech@signalwayantibody.com)

## Description

Product Name	ErbB-2/HER-2 Mouse Monoclonal Antibody
Host Species	Mouse
Clonality	Monoclonal
Clone No.	11H9
Purification	Affinity purification using immunogen.
Applications	WB,IHC,IF
Species Reactivity	Hu Ms Rt
Specificity	The ErbB-2/HER-2 Mouse Monoclonal antibody detects endogenous ErbB-2/HER-2 proteins.
Target Name	ErbB-2/HER-2
Other Names	c-erb B2/neu protein; CD340; erbB-2; ERBB2; HER-2; HER-2/neu; HER2; herstatin; Metastatic lymph node gene 19 protein; MLN 19;
Accession No.	Swiss-Prot#:P04626
Uniprot	P04626
GeneID	2064;
SDS-PAGE MW	138kd
Concentration	1.0mg/ml
Formulation	Mouse IgG1 in phosphate buffered saline (without Mg <sup>2+</sup> and Ca <sup>2+</sup> ), pH 7.4, 150mM NaCl, 0.02% sodium azide and 50% glycerol.
Storage	Store at -20°C

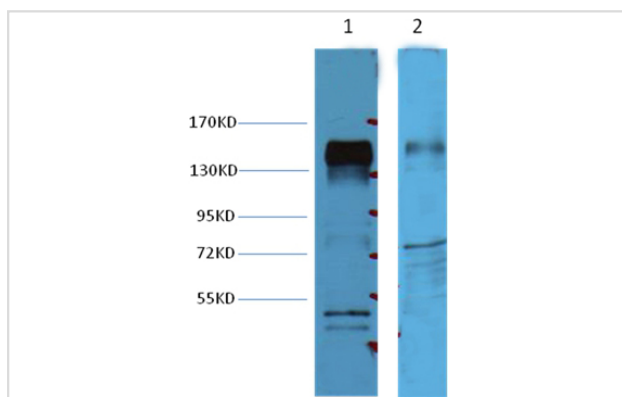
## Application Details

WB dilution: 1:2000~1:4000

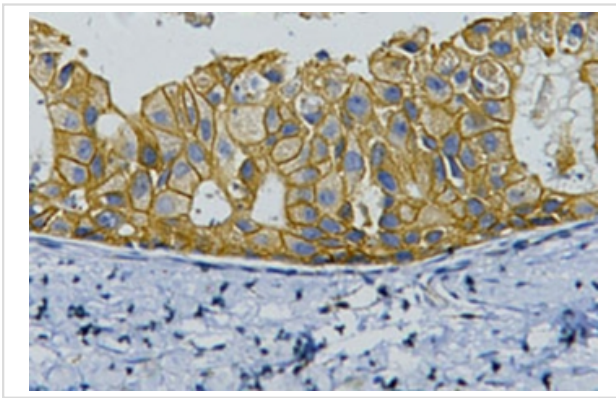
IHC dilution: 1:200

IF dilution:1:200

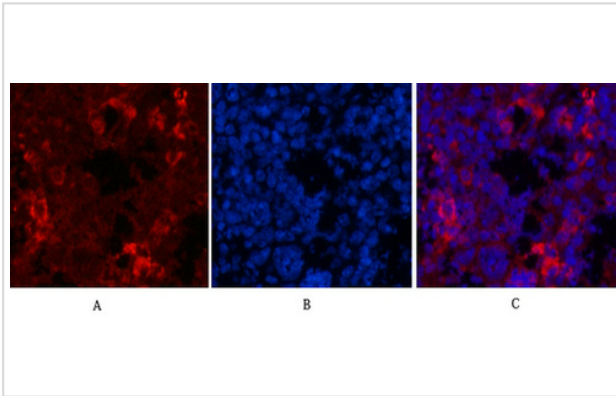
## Images



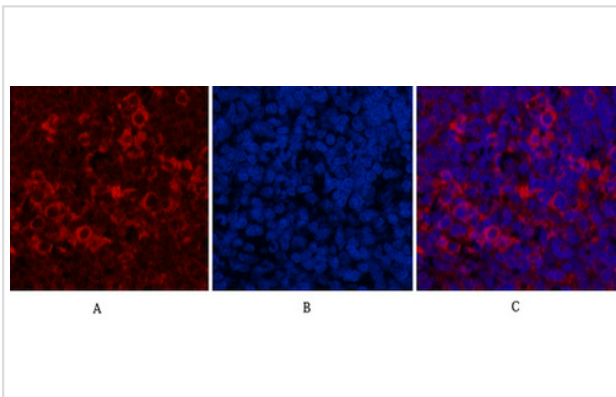
Western blot analysis of Hela cell lysate (lane 1) and mouse brain (lane 2), using #37997 diluted at 1:4,000.



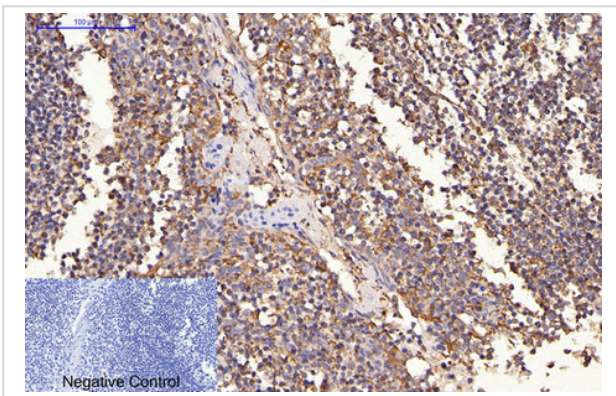
IHC staining of human breast cancer tissue with ErbB-2/HER-2 mouse mAb(11H9) diluted at 1:200.



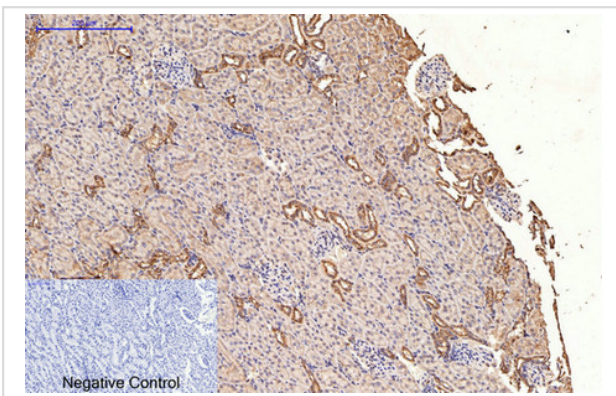
Immunofluorescence analysis of Mouse-spleen tissue. 1,HER2 Monoclonal Antibody(11H9)(red) was diluted at 1:200(4C,overnight). 2, Cy3 labeled Secondary antibody was diluted at 1:300(room temperature, 50min).3, Picture B: DAPI(blue) 10min. Picture A:Target. Picture B: DAPI. Picture C: merge of A+B



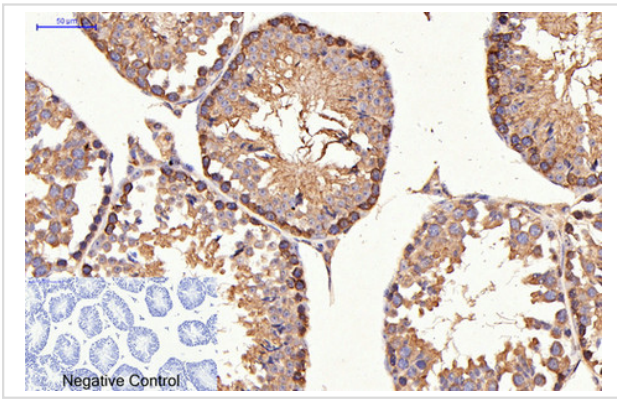
Immunofluorescence analysis of Rat-spleen tissue. 1,HER2 Monoclonal Antibody(11H9)(red) was diluted at 1:200(4C,overnight). 2, Cy3 labeled Secondary antibody was diluted at 1:300(room temperature, 50min).3, Picture B: DAPI(blue) 10min. Picture A:Target. Picture B: DAPI. Picture C: merge of A+B



Immunohistochemical analysis of paraffin-embedded Human-Tonsil tissue. 1,HER2 Monoclonal Antibody(11H9) was diluted at 1:200(4C,overnight). 2, Sodium citrate pH 6.0 was used for antibody retrieval(>98C,20min). 3,Secondary antibody was diluted at 1:200(room temperature, 30min). Negative control was used by secondary antibody only.



Immunohistochemical analysis of paraffin-embedded Rat-kidney tissue. 1,HER2 Monoclonal Antibody(11H9) was diluted at 1:200(4C,overnight). 2, Sodium citrate pH 6.0 was used for antibody retrieval(>98C,20min). 3,Secondary antibody was diluted at 1:200(room temperature, 30min). Negative control was used by secondary antibody only.



Immunohistochemical analysis of paraffin-embedded Mouse-testis tissue. 1,HER2 Monoclonal Antibody(11H9) was diluted at 1:200(4C,overnight). 2, Sodium citrate pH 6.0 was used for antibody retrieval(>98C,20min). 3,Secondary antibody was diluted at 1:200(room tempeRature, 30min). Negative control was used by secondary antibody only.

## Background

ErbB 2 is a receptor tyrosine kinase of the ErbB 2 family. It is closely related in structure to the epidermal growth factor receptor. ErbB 2 oncoprotein is detectable in a proportion of breast and other adenocarcinomas, as well as transitional cell carcinomas. In the case of breast cancer, expression determined by immunohistochemistry has been shown to be associated with poor prognosis.

Note: This product is for in vitro research use only