

CD20 Mouse Monoclonal Antibody

Catalog No: #38003

Orders: order@signalwayantibody.comSupport: tech@signalwayantibody.com

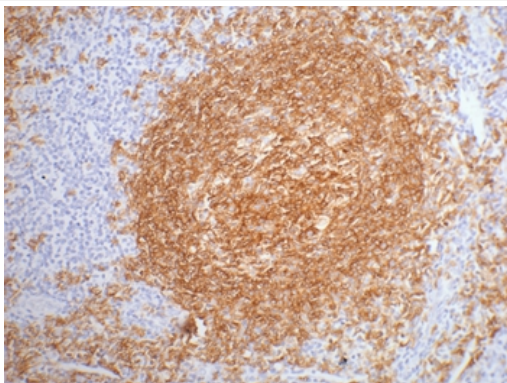
Description

Product Name	CD20 Mouse Monoclonal Antibody
Host Species	Mouse
Clonality	Monoclonal
Clone No.	2F4
Purification	Affinity purification using immunogen.
Applications	IHC
Species Reactivity	Hu Ms Rt
Specificity	The CD20 antibody detects endogenous CD20 proteins.
Target Name	CD20
Other Names	CD20; CK-20; CK20; cytokeratin 20; Cytokeratin-20; K1C20; K20
Accession No.	Swiss-Prot#:P35900
Uniprot	P35900
GeneID	54474;
SDS-PAGE MW	35~37kd
Concentration	1.0mg/ml
Formulation	Mouse IgG1 in phosphate buffered saline (without Mg2+ and Ca2+), pH 7.4, 150mM NaCl, 0.02% sodium azide and 50% glycerol.
Storage	Store at -20°C

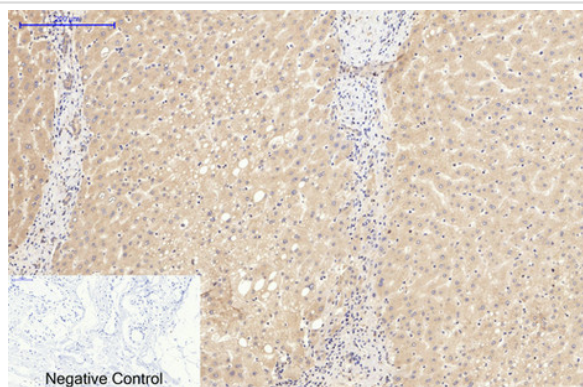
Application Details

IHC dilution: 1:200

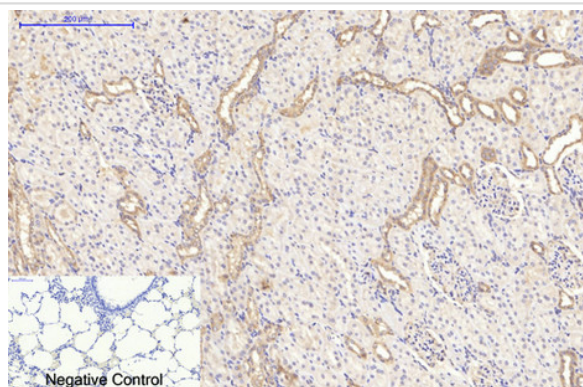
Images



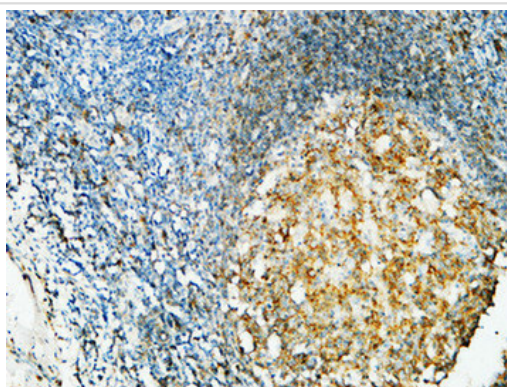
IHC staining of paraffin-embedded Human tonsil tissue with CD20 mouse mAb 2F4 diluted at 1:200.



Immunohistochemical analysis of paraffin-embedded Human-breast tissue. 1,CD20 Monoclonal Antibody(2F4) was diluted at 1:200(4C,overnight). 2, Sodium citrate pH 6.0 was used for antibody retrieval(>98C,20min). 3,Secondary antibody was diluted at 1:200(room tempeRature, 30min). Negative control was used by secondary antibody only.



Immunohistochemical analysis of paraffin-embedded Rat-lung tissue. 1,CD20 Monoclonal Antibody(2F4) was diluted at 1:200(4C,overnight). 2, Sodium citrate pH 6.0 was used for antibody retrieval(>98C,20min). 3,Secondary antibody was diluted at 1:200(room tempeRature, 30min). Negative control was used by secondary antibody only.



Immunohistochemical analysis of paraffin-embedded Human Amygdala. 1, Antibody was diluted at 1:100(4,overnight). 2, High-pressure and temperature EDTA, pH8.0 was used for antigen retrieval. 3,Secondary antibody was diluted at 1:200(room temperature, 30min).

Background

CD20 is a non glycosylated protein with a molecular weight of 35 or 37 kDa depending on the degree of phosphorylation. Although not a member of the tetraspanin superfamily of cell surface receptors, it crosses the cell membrane four times. The CD20 antigen is present on human pre B lymphocytes and on B lymphocytes at all stages of maturation, except on plasma cells. Low level expression of the CD20 antigen has been detected on normal T lymphocytes. The CD20 molecule is involved in regulation of B cell differentiation, presumably via its reported function as a Ca²⁺ channel subunit.

Note: This product is for in vitro research use only