

CD23 Mouse Monoclonal Antibody

Catalog No: #38004

Orders: order@signalwayantibody.comSupport: tech@signalwayantibody.com

Description

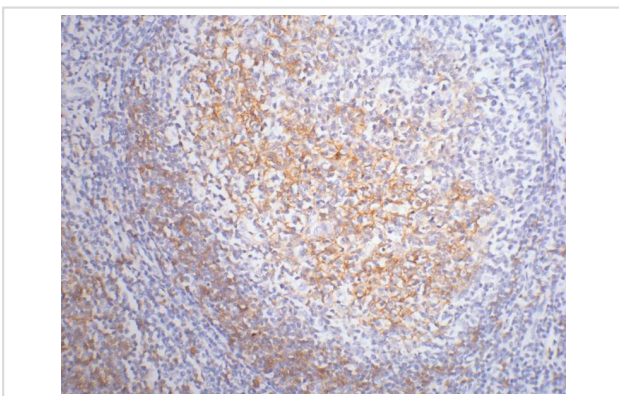
Product Name	CD23 Mouse Monoclonal Antibody
Host Species	Mouse
Clonality	Monoclonal
Clone No.	1.00E+09
Purification	Affinity purification using immunogen.
Applications	IHC,IF
Species Reactivity	Hu Ms Rt
Specificity	The CD23 antibody detects endogenous CD23 proteins.
Target Name	CD23
Other Names	Fc fragment of IgE, high affinity I, receptor for; Fc-epsilon RI-gamma; FCER1G; FCERG
Accession No.	Swiss-Prot#:P30273
Uniprot	P30273
GeneID	2207;
SDS-PAGE MW	28,38,49kd
Concentration	1.0mg/ml
Formulation	Mouse IgG1 in phosphate buffered saline (without Mg2+ and Ca2+), pH 7.4, 150mM NaCl, 0.02% sodium azide and 50% glycerol.
Storage	Store at -20°C

Application Details

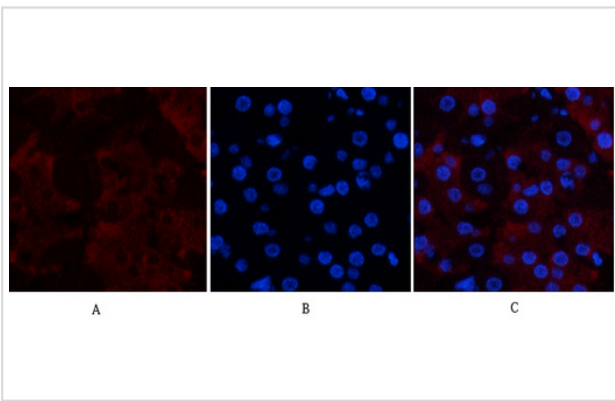
IHC dilution: 1:200

IF dilution:1:50-200

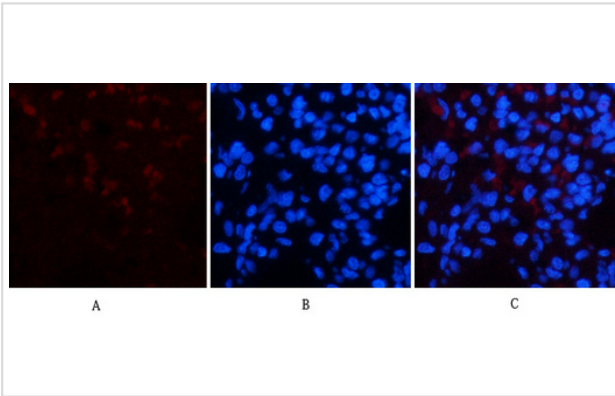
Images



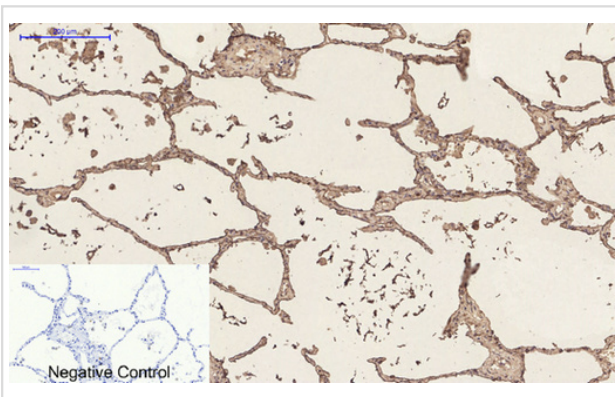
IHC staining of paraffin-embedded Human tonsil tissue with CD23 mouse mAb diluted at 1:200.



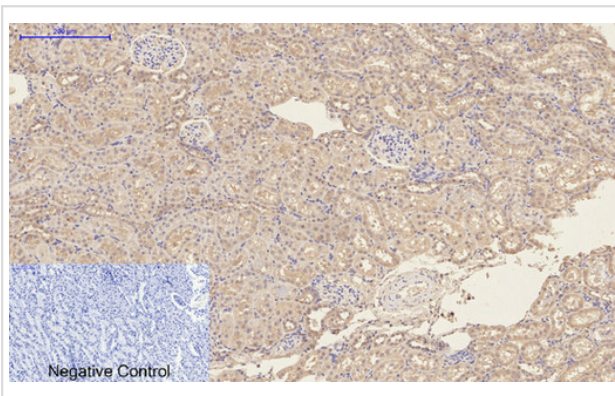
Immunofluorescence analysis of human-stomach tissue. 1,CD23 Monoclonal Antibody(1E9)(red) was diluted at 1:200(4C,overnight). 2, Cy3 labeled Secondary antibody was diluted at 1:300(room temperature, 50min).3, Picture B: DAPI(blue) 10min. Picture A:Target. Picture B: DAPI. Picture C: merge of A+B



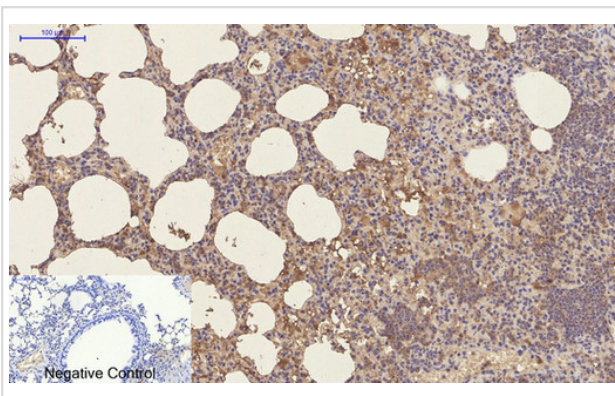
Immunofluorescence analysis of rat-lung tissue. 1,CD23 Monoclonal Antibody(1E9)(red) was diluted at 1:200(4C,overnight). 2, Cy3 labeled Secondary antibody was diluted at 1:300(room temperature, 50min).3, Picture B: DAPI(blue) 10min. Picture A:Target. Picture B: DAPI. Picture C: merge of A+B



Immunohistochemical analysis of paraffin-embedded Human-lung tissue. 1,CD23 Monoclonal Antibody(1E9) was diluted at 1:200(4C,overnight). 2, Sodium citrate pH 6.0 was used for antibody retrieval(>98C,20min). 3,Secondary antibody was diluted at 1:200(room temperature, 30min). Negative control was used by secondary antibody only.



Immunohistochemical analysis of paraffin-embedded Rat-kidney tissue. 1,CD23 Monoclonal Antibody(1E9) was diluted at 1:200(4C,overnight). 2, Sodium citrate pH 6.0 was used for antibody retrieval(>98C,20min). 3,Secondary antibody was diluted at 1:200(room temperature, 30min). Negative control was used by secondary antibody only.



Immunohistochemical analysis of paraffin-embedded Mouse-lung tissue. 1,CD23 Monoclonal Antibody(1E9) was diluted at 1:200(4C,overnight). 2, Sodium citrate pH 6.0 was used for antibody retrieval(>98C,20min). 3,Secondary antibody was diluted at 1:200(room temperature, 30min). Negative control was used by secondary antibody only.

Background

The CD23 antigen is the low affinity IgE Fc receptor, which is a 49 kDa protein with 38 and 28 kDa fragments. It is expressed on most mature, conventional B cells and can also be found on the surface of T cells, macrophages, platelets and EBV transformed B lymphoblasts. Expression of CD23 has been detected in neoplastic cells from cases of B cell chronic Lymphocytic leukemia. CD23 is expressed by B cells in the follicular mantle but not by proliferating germinal centre cells. CD23 is also expressed by eosinophils.

Note: This product is for in vitro research use only