

CK7 Mouse Monoclonal Antibody

Catalog No: #38009

Orders: order@signalwayantibody.comSupport: tech@signalwayantibody.com

Description

Product Name	CK7 Mouse Monoclonal Antibody
Host Species	Mouse
Clonality	Monoclonal
Clone No.	12D7
Purification	The antibody was affinity-purified from mouse ascites by affinity-chromatography using specific immunogen.
Applications	WB,IHC,IF
Species Reactivity	Human;Mouse
Specificity	The CK7 Mouse Monoclonal antibody detects endogenous CK7 proteins.
Immunogen Description	Synthetic Peptide of CK7
Target Name	CK7
Other Names	CK-7; CK7; cytokeratin 7; Cytokeratin-7; K2C7; K7; keratin 7
Accession No.	Swiss-Prot#:P08729
Uniprot	P08729
GeneID	3855;
SDS-PAGE MW	54kd
Concentration	1.0mg/ml
Formulation	PBS, pH 7.4, containing 0.5%BSA, 0.02% sodium azide as Preservative and 50% Glycerol.
Storage	Store at -20 Λ C/1 year

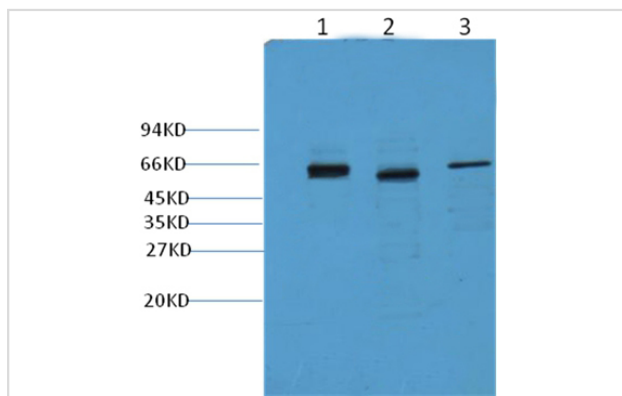
Application Details

WB dilution: 1:1000~1:2000

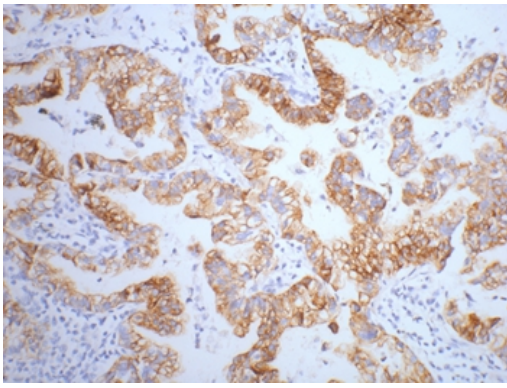
IHC dilution: 1:200

IF dilution:1:50-200

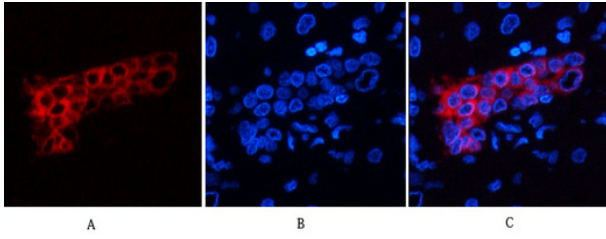
Images



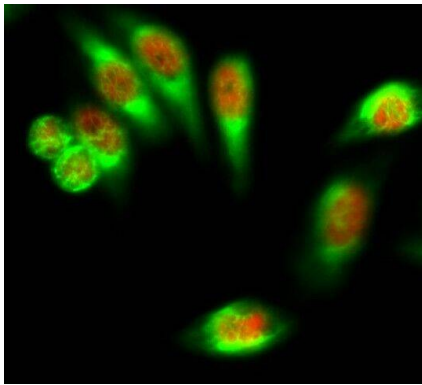
Western blot analysis of Hela (lane 1), Mouse Kidney (lane 2) and Mouse Brain (lane 3), using #38009 diluted at 1:2,000.



IHC staining of human lung cancer tissue with CK7 mouse mAb(12D7) diluted at 1:200.



Immunofluorescence analysis of human-liver tissue. 1,CK7 Monoclonal Antibody(12D7)(red) was diluted at 1:200(4C,overnight). 2, Cy3 labeled Secondary antibody was diluted at 1:300(room temperature, 50min).3, Picture B: DAPI(blue) 10min. Picture A:Target. Picture B: DAPI. Picture C: merge of A+B



Immunofluorescence analysis of Hela cell.

Background

Cytokeratin 7 is a 54kD intermediate filament protein found in a variety of glandularepithelia. Cytokeratin 7 has been found in columnar and glandular epithelium of the lung, cervix, breast, bile ducts and larger collecting ducts of the kidney. It is present in the transitional epithelium of bladder as well as ovarian and lungepithelia, and occasionally staining of blood vessel cell walls, particularly endothelial cells, may be observed. However, Cytokeratin 7 is not expressed by epithelial cells of the gastrointestinal tract, colon or prostate. Keratin 7 is often co expressed with keratin 19.

Note: This product is for in vitro research use only