

CK8 Mouse Monoclonal Antibody

Catalog No: #38010

Orders: order@signalwayantibody.comSupport: tech@signalwayantibody.com

Description

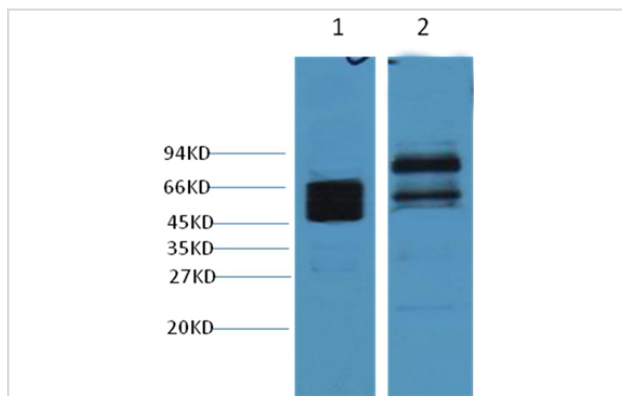
Product Name	CK8 Mouse Monoclonal Antibody
Host Species	Mouse
Clonality	Monoclonal
Clone No.	8G8
Purification	Affinity purification using immunogen.
Applications	WB,IHC,IF
Species Reactivity	Hu Ms Rt
Specificity	The CK8 Mouse Monoclonal antibody detects endogenous CK8 proteins.
Target Name	CK8
Other Names	CARD2; CK-8; CK8; CYK8; cytokeratin 8; Cytokeratin-8; K2C8; K8; keratin 8
Accession No.	Swiss-Prot#:P05787
Uniprot	P05787
GeneID	3856;
SDS-PAGE MW	54kd
Concentration	1.0mg/ml
Formulation	Mouse IgG1 in phosphate buffered saline (without Mg ²⁺ and Ca ²⁺), pH 7.4, 150mM NaCl, 0.02% sodium azide and 50% glycerol.
Storage	Store at -20°C

Application Details

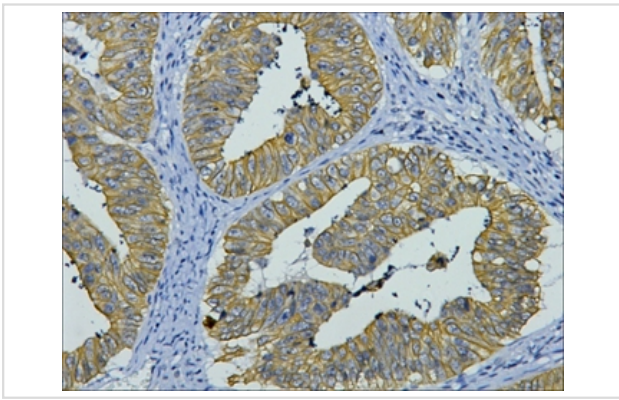
WB dilution: 1:2000~1:5000

IHC dilution: 1:200

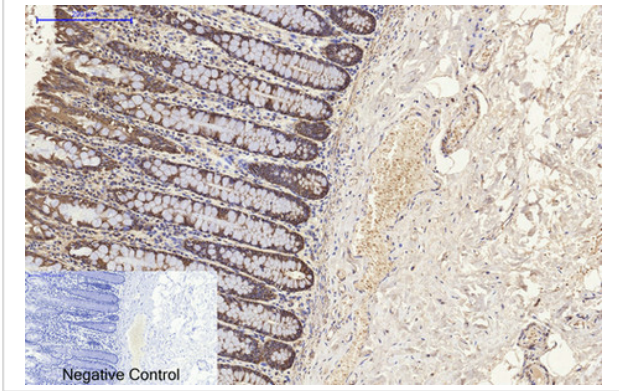
Images



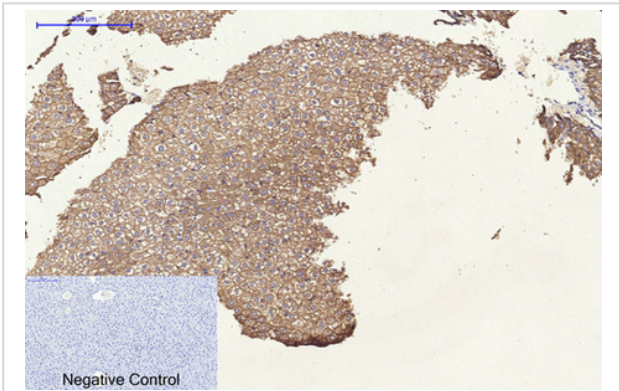
Western blot analysis of Hela (lane 1) and Mouse Brain (lane 2), using #38010 diluted at 1:4,000.



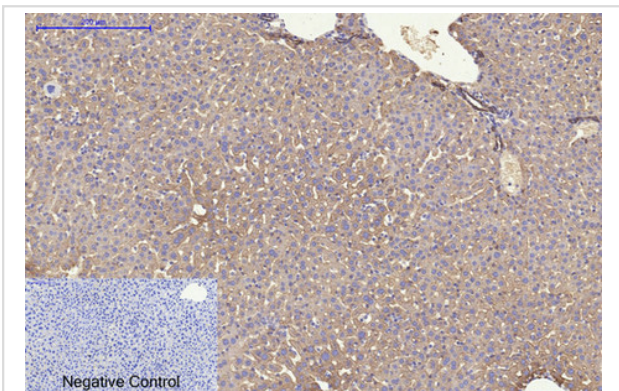
IHC staining of human colon cancer tissue with CK8 mouse mAb(8G8) diluted at 1:200.



Immunohistochemical analysis of paraffin-embedded Human-colon tissue. 1,CK8 Monoclonal Antibody(8G8) was diluted at 1:200(4C,overnight). 2, Sodium citrate pH 6.0 was used for antibody retrieval(>98C,20min). 3,Secondary antibody was diluted at 1:200(room tempeRature, 30min). Negative control was used by secondary antibody only.



Immunohistochemical analysis of paraffin-embedded Rat-liver tissue. 1,CK8 Monoclonal Antibody(8G8) was diluted at 1:200(4C,overnight). 2, Sodium citrate pH 6.0 was used for antibody retrieval(>98C,20min). 3,Secondary antibody was diluted at 1:200(room tempeRature, 30min). Negative control was used by secondary antibody only.



Immunohistochemical analysis of paraffin-embedded Mouse-liver tissue. 1,CK8 Monoclonal Antibody(8G8) was diluted at 1:200(4C,overnight). 2, Sodium citrate pH 6.0 was used for antibody retrieval(>98C,20min). 3,Secondary antibody was diluted at 1:200(room tempeRature, 30min). Negative control was used by secondary antibody only.

Background

Cytokeratin 8 belongs to the type B (basic) subfamily of high molecular weight keratins and exists in combination with cytokeratin 18. Cytokeratin 8 is primarily found in the non squamous epithelia and is present in majority of adenocarcinomas and ductal carcinomas. It is absent in squamous cell carcinomas.

Note: This product is for in vitro research use only