

CDX2 Mouse Monoclonal Antibody

Catalog No: #38012

Orders: order@signalwayantibody.comSupport: tech@signalwayantibody.com

Description

Product Name	CDX2 Mouse Monoclonal Antibody
Host Species	Mouse
Clonality	Monoclonal
Clone No.	14H6
Purification	Affinity purification using immunogen.
Applications	WB,IHC,IF
Species Reactivity	Hu Ms Rt
Specificity	The CDX2 Mouse Monoclonal antibody detects endogenous CDX2 proteins.
Target Name	CDX2
Other Names	caudal type homeo box transcription factor 2; caudal type homeobox 2; caudal type homeobox transcription factor 2
Accession No.	Swiss-Prot#:Q99626
Uniprot	Q99626
GeneID	1045;
SDS-PAGE MW	42kd
Concentration	1.0mg/ml
Formulation	Mouse IgG1 in phosphate buffered saline (without Mg ²⁺ and Ca ²⁺), pH 7.4, 150mM NaCl, 0.02% sodium azide and 50% glycerol.
Storage	Store at -20°C

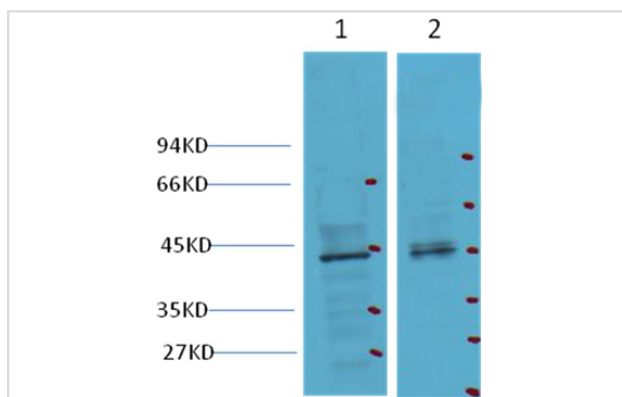
Application Details

WB dilution: 1:1000~1:2000

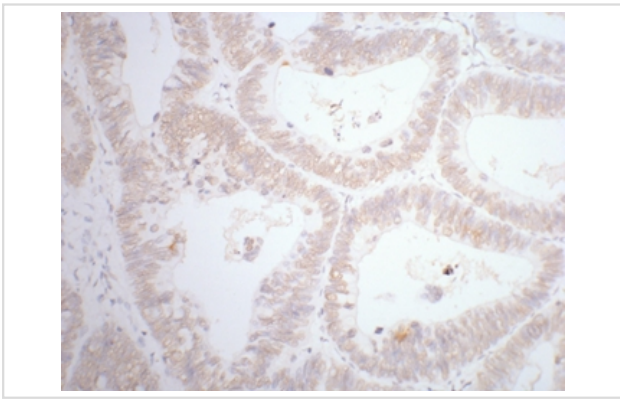
IHC dilution: 1:200

IF dilution:1:200

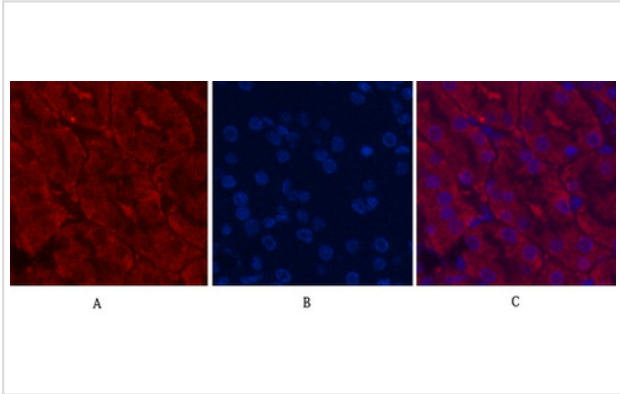
Images



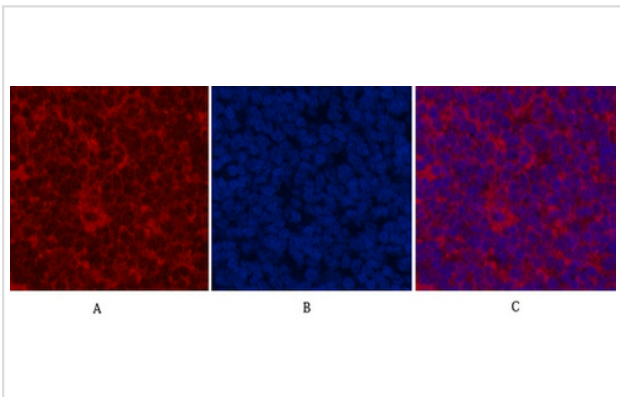
Western blot analysis of 293T (lane 1) and Mouse Heart (lane 2) tissue, using #38012 diluted at 1:2,000.



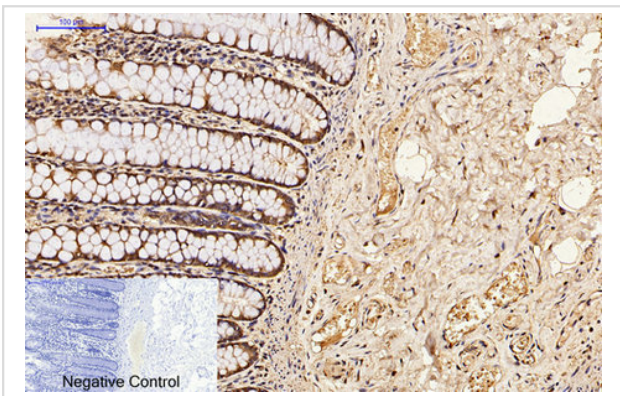
IHC staining of human rectal cancer tissue with CDX2 mouse mAb(14H6) diluted at 1:200.



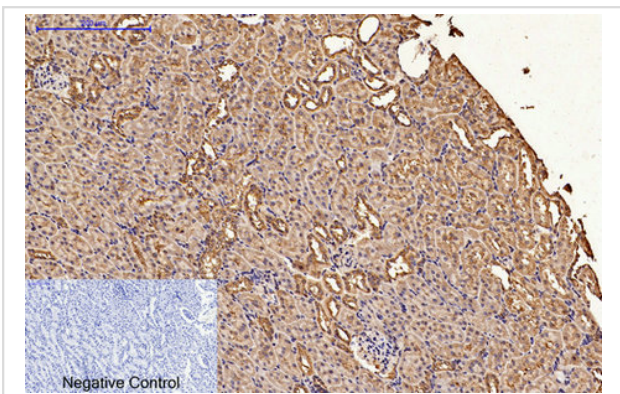
Immunofluorescence analysis of Mouse-kidney tissue. 1,CDX2 Monoclonal Antibody(14H6)(red) was diluted at 1:200(4C,overnight). 2, Cy3 labeled Secondary antibody was diluted at 1:300(room temperature, 50min).3, Picture B: DAPI(blue) 10min. Picture A:Target. Picture B: DAPI. Picture C: merge of A+B



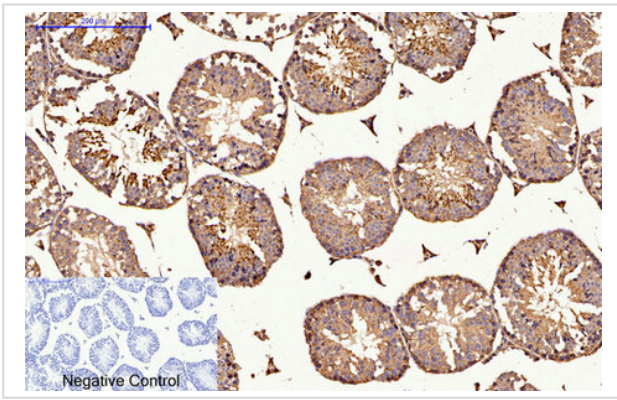
Immunofluorescence analysis of Rat-spleen tissue. 1,CDX2 Monoclonal Antibody(14H6)(red) was diluted at 1:200(4C,overnight). 2, Cy3 labeled Secondary antibody was diluted at 1:300(room temperature, 50min).3, Picture B: DAPI(blue) 10min. Picture A:Target. Picture B: DAPI. Picture C: merge of A+B



Immunohistochemical analysis of paraffin-embedded Human-colon tissue. 1,CDX2 Monoclonal Antibody(14H6) was diluted at 1:200(4C,overnight). 2, Sodium citrate pH 6.0 was used for antibody retrieval(>98C,20min). 3,Secondary antibody was diluted at 1:200(room temperature, 30min). Negative control was used by secondary antibody only.



Immunohistochemical analysis of paraffin-embedded Rat-kidney tissue. 1,CDX2 Monoclonal Antibody(14H6) was diluted at 1:200(4C,overnight). 2, Sodium citrate pH 6.0 was used for antibody retrieval(>98C,20min). 3,Secondary antibody was diluted at 1:200(room temperature, 30min). Negative control was used by secondary antibody only.



Immunohistochemical analysis of paraffin-embedded Mouse-testis tissue. 1,CDX2 Monoclonal Antibody(14H6) was diluted at 1:200(4C,overnight). 2, Sodium citrate pH 6.0 was used for antibody retrieval(>98C,20min). 3,Secondary antibody was diluted at 1:200(room tempeRature, 30min). Negative control was used by secondary antibody only.

Background

CDX2 is a caudal type homeobox gene that encodes an intestine-specific transcription factor that is expressed early in intestinal development and may be involved in the regulation of proliferation and differentiation of intestinal epithelial cells. It is expressed in the nuclei of epithelial cells throughout the intestine, from duodenum to rectum. The CDX2 protein is expressed in primary and metastatic colorectal carcinomas and has also been demonstrated in the intestinal metaplasia of the stomach and intestinal-type gastric cancer, while it is not expressed in the normal gastric mucosa. Studies have shown that CDX2 is superior marker compared to CK20.

Note: This product is for in vitro research use only