

## Myosin Heavy Chain Mouse Monoclonal Antibody

Catalog No: #38013

Orders: [order@signalwayantibody.com](mailto:order@signalwayantibody.com)Support: [tech@signalwayantibody.com](mailto:tech@signalwayantibody.com)

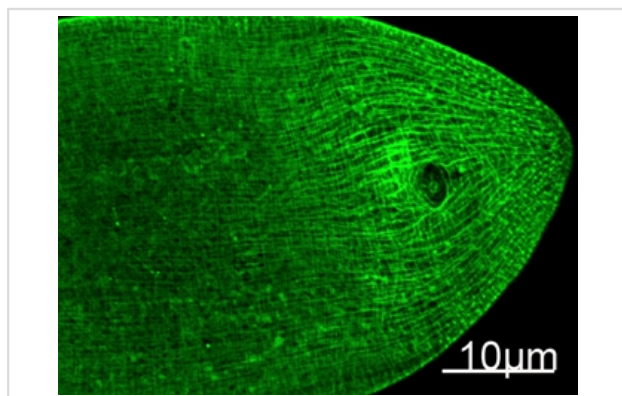
## Description

Product Name	Myosin Heavy Chain Mouse Monoclonal Antibody
Host Species	Mouse
Clonality	Monoclonal
Purification	The antibody was affinity-purified from mouse ascites by affinity-chromatography using specific immunogen.
Applications	IF
Species Reactivity	Human;Mouse;Rat;FruitFly;Nematode
Specificity	The Myosin Heavy Chain Mouse Monoclonal antibody detects endogenous MHC proteins.
Target Name	Myosin Heavy Chain
SDS-PAGE MW	220kd
Concentration	1.0mg/ml
Formulation	PBS, pH 7.4, containing 0.5%BSA, 0.02% sodium azide as Preservative and 50% Glycerol.
Storage	Store at -20°C

## Application Details

IF dilution: 1:100

## Images



Immunofluorescence staining of nematode tissue with MYH mouse mAb(11C2) diluted at 1:100.

## Background

Skeletal muscle Myosin or myosin II is the motor protein that generates force to drive muscle contraction. It is a 520 kDa hexamer comprised of two heavy chains and four light chains. Myosin heavy chain is 220 kDa in size and consists of a long coiled-coil domain tail that mediates dimerization of the two heavy chains and a globular head region that mediates ATP-dependent sliding of actin filaments. Myosin heavy chain can be proteolytically cleaved to produce heavy meromyosin, which includes the S1 motor domain (head region) and first third of the coiled coil domain, and light meromyosin, which includes the C-terminal two thirds of the coiled coil domain.

---

Note: This product is for in vitro research use only