

Ki 67 Mouse Monoclonal Antibody

Catalog No: #38019

Orders: order@signalwayantibody.comSupport: tech@signalwayantibody.com

Description

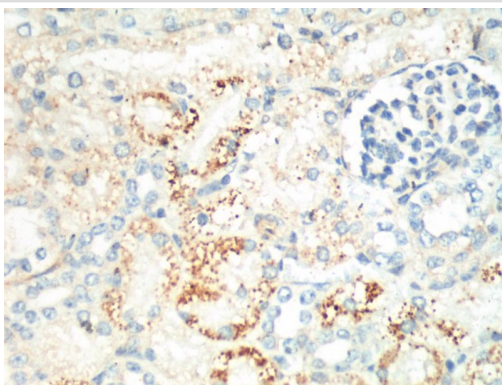
Product Name	Ki 67 Mouse Monoclonal Antibody
Host Species	Mouse
Clonality	Monoclonal
Clone No.	4A8
Purification	Affinity purification using immunogen.
Applications	IHC,IF
Species Reactivity	Human
Specificity	The Ki 67 Mouse Monoclonal antibody detects endogenous Ki 67 protein.s
Target Name	Ki 67
Other Names	antigen identified by monoclonal antibody Ki-67; Antigen KI-67; KI67; KIA; MKI67
Accession No.	Swiss-Prot#:P46013
Uniprot	P46013
GeneID	4288;
Concentration	1.0mg/ml
Formulation	PBS, pH 7.4, containing 0.5%BSA, 0.02% sodium azide as Preservative and 50% Glycerol.
Storage	Store at -20°C

Application Details

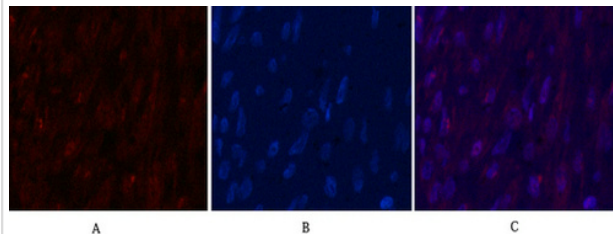
IHC dilution: 1:200

IF dilution:1:50-200

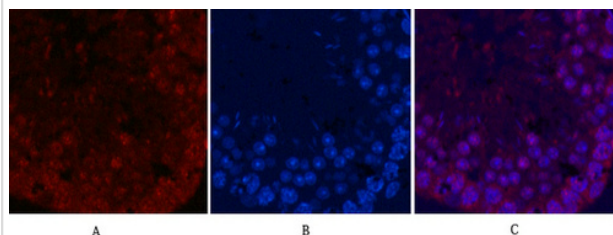
Images



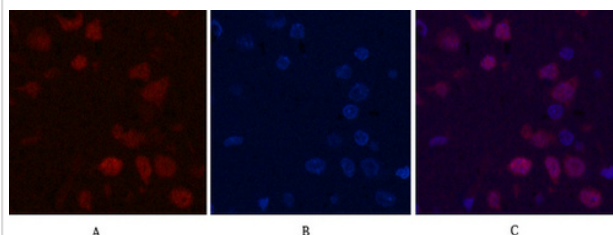
IHC staining of Mouse Kidney tissue with Ki 67 mouse mAb(4A8) diluted at 1:200.



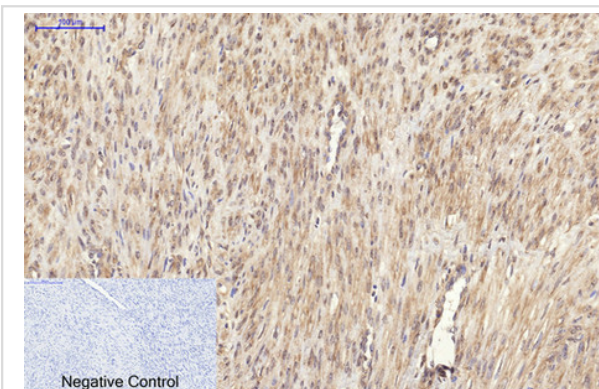
Immunofluorescence analysis of Human-breast-cancer tissue. 1, Ki 67 Monoclonal Antibody(4A8)(red) was diluted at 1:200(4°C, overnight). 2, Cy3 labeled Secondary antibody was diluted at 1:300(room temperature, 50min). 3, Picture B: DAPI(blue) 10min. Picture A: Target. Picture C: merge of A+B



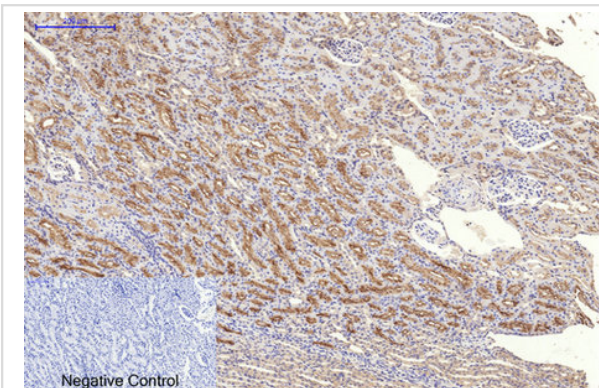
Immunofluorescence analysis of Mouse-testis tissue. 1, Ki 67 Monoclonal Antibody(4A8)(red) was diluted at 1:200(4°C, overnight). 2, Cy3 labeled Secondary antibody was diluted at 1:300(room temperature, 50min). 3, Picture B: DAPI(blue) 10min. Picture A: Target. Picture C: merge of A+B



Immunofluorescence analysis of Rat-brain tissue. 1, Ki 67 Monoclonal Antibody(4A8)(red) was diluted at 1:200(4°C, overnight). 2, Cy3 labeled Secondary antibody was diluted at 1:300(room temperature, 50min). 3, Picture B: DAPI(blue) 10min. Picture A: Target. Picture C: merge of A+B



Immunohistochemical analysis of paraffin-embedded Human-uterus-cancer tissue. 1, Ki 67 Monoclonal Antibody(4A8) was diluted at 1:200(4°C, overnight). 2, Sodium citrate pH 6.0 was used for antibody retrieval(>98°C, 20min). 3, Secondary antibody was diluted at 1:200(room temperature, 30min). Negative control was used by secondary antibody only.



Immunohistochemical analysis of paraffin-embedded Rat-kidney tissue. 1, Ki 67 Monoclonal Antibody(4A8) was diluted at 1:200(4°C, overnight). 2, Sodium citrate pH 6.0 was used for antibody retrieval(>98°C, 20min). 3, Secondary antibody was diluted at 1:200(room temperature, 30min). Negative control was used by secondary antibody only.

Background

KI-67 is a nuclear protein that is associated with and may be necessary for cellular proliferation. Furthermore it is associated with ribosomal RNA transcription. Inactivation of antigen KI-67 leads to inhibition of ribosomal RNA synthesis. The Ki-67 protein (also known as MKI67) is a cellular marker for proliferation. It is strictly associated with cell proliferation. During interphase, the Ki-67 antigen can be exclusively detected within the cell nucleus, whereas in mitosis most of the protein is relocated to the surface of the chromosomes. Ki-67 protein is present during all active phases of the cell cycle (G1, S, G2, and mitosis), but is absent from resting cells (G0).

Note: This product is for in vitro research use only