

## alpha 1 Fetoprotein Mouse Monoclonal Antibody

Catalog No: #38032

Orders: order@signalwayantibody.com

Support: tech@signalwayantibody.com

## Description

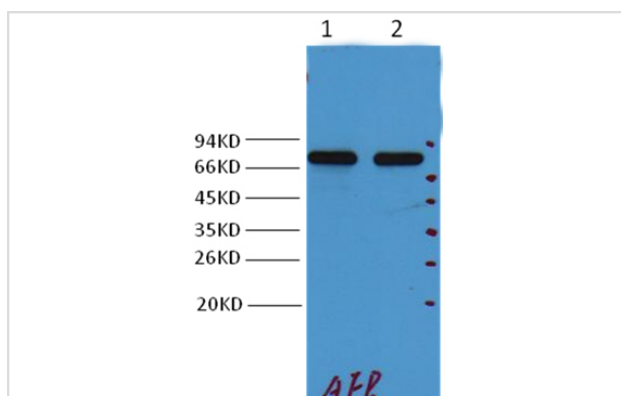
Product Name	alpha 1 Fetoprotein Mouse Monoclonal Antibody
Host Species	Mouse
Clonality	Monoclonal
Purification	Affinity purification using immunogen.
Applications	WB,IHC,IF
Species Reactivity	Hu
Specificity	AFP Mouse Monoclonal antibody detects endogenous AFP protein.s
Target Name	alpha 1 Fetoprotein
Other Names	AFP; Alpha-1-fetoprotein; Alpha-fetoglobulin; Alpha-fetoprotein; FETA; HPAFP
Accession No.	Swiss-Prot#:P02771
Uniprot	P02771
GeneID	174;
SDS-PAGE MW	70kd
Concentration	1.0mg/ml
Formulation	Mouse IgG1 in phosphate buffered saline (without Mg2+ and Ca2+), pH 7.4, 150mM NaCl, 0.02% sodium azide and 50% glycerol.
Storage	Store at -20°C

## Application Details

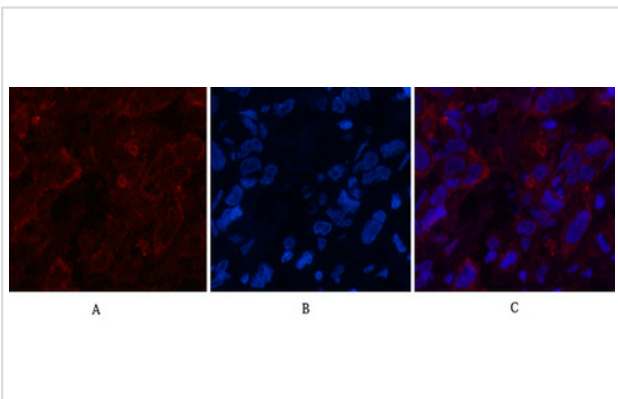
WB dilution: 1:2000

IHC dilution:1:50-300IF dilution:1:200

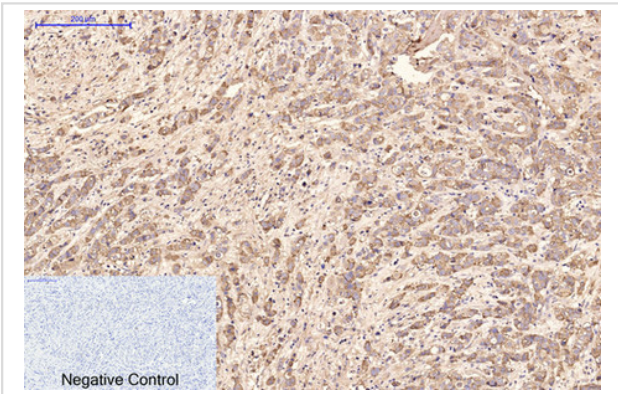
## Images



Western blot analysis of HepG2, using #38032 diluted at 1:2,000.



Immunofluorescence analysis of Human-breast-cancer tissue. 1,AFP alpha 1 Fetoprotein Monoclonal Antibody(17C5)(red) was diluted at 1:200(4C,overnight). 2, Cy3 labeled Secondary antibody was diluted at 1:300(room temperature, 50min).3, Picture B: DAPI(blue) 10min. Picture A:Target. Picture C: DAPI. Picture C: merge of A+B



Immunohistochemical analysis of paraffin-embedded Human-breast-cancer tissue. 1,AFP alpha 1 Fetoprotein Monoclonal Antibody(17C5) was diluted at 1:200(4C,overnight). 2, Sodium citrate pH 6.0 was used for antibody retrieval(>98C,20min). 3,Secondary antibody was diluted at 1:200(room temperature, 30min). Negative control was used by secondary antibody only.

## Background

alpha-1-fetoprotein (AFP) is a protein that in humans is encoded by the AFP gene. The AFP gene is located on the q arm of chromosome 4 (4q25).AFP is a major plasma protein produced by the yolk sac and the liver during fetal development that is thought to be the fetal form of serum albumin. AFP binds to copper, nickel, fatty acids and bilirubin and is found in monomeric, dimeric and trimeric forms

Note: This product is for in vitro research use only