

Caspase 9 Mouse Monoclonal Antibody

Catalog No: #38034

Orders: order@signalwayantibody.comSupport: tech@signalwayantibody.com

Description

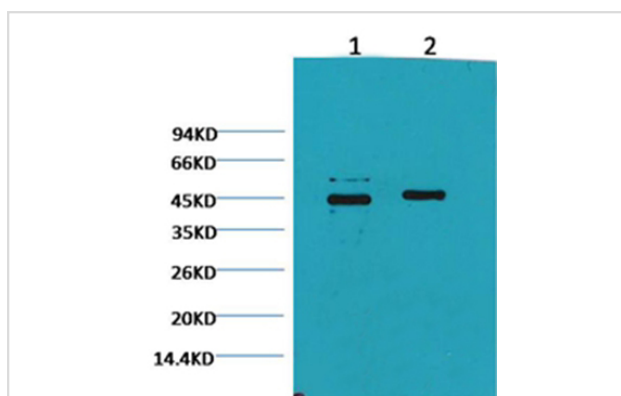
Product Name	Caspase 9 Mouse Monoclonal Antibody
Host Species	Mouse
Clonality	Monoclonal
Purification	Affinity purification using immunogen.
Applications	WB,IHC,IF
Species Reactivity	Hu Rt Ms
Specificity	Antibody detects endogenous Caspase 9 protein.
Target Name	Caspase 9
Other Names	APAF-3; APAF3; apoptotic protease activating factor 3; Apoptotic protease Mch-6
Accession No.	Swiss-Prot#:P55211
Uniprot	P55211
GeneID	842;
SDS-PAGE MW	46kd
Concentration	1.0mg/ml
Formulation	Mouse IgG1 in phosphate buffered saline (without Mg ²⁺ and Ca ²⁺), pH 7.4, 150mM NaCl, 0.02% sodium azide and 50% glycerol.
Storage	Store at -20°C

Application Details

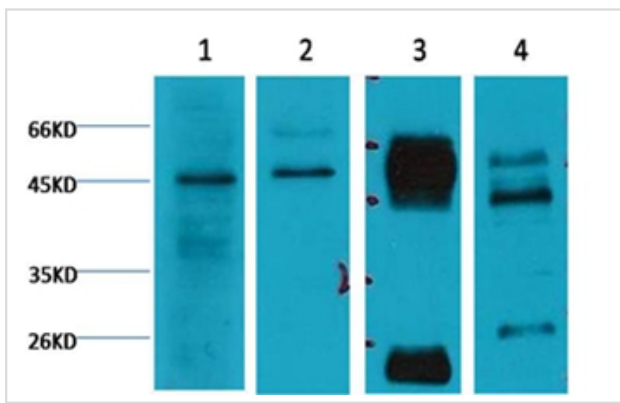
WB dilution: 1:1000~1:5000

IP dilution: 1:200IHC dilution:1:50-300IF dilution:1:200

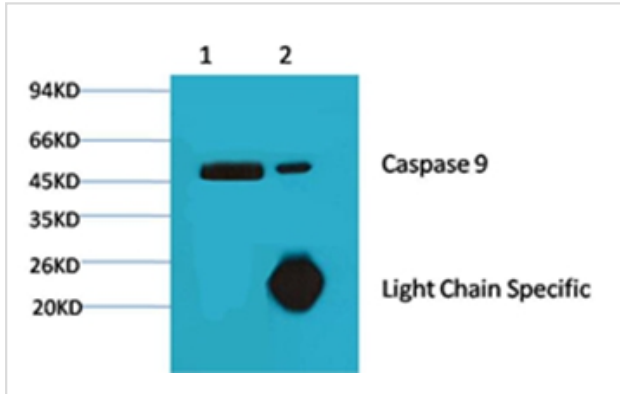
Images



Western blot analysis of HeLa cells, using #38034 diluted at 1B£B©1:2,000 2B£B©1:5,000



Western blot analysis of 1B£B@Jurkat, 2) HepG2, 3) Mouse Heart, 4) Rat Heart, using #38034 diluted at 1:3,000.

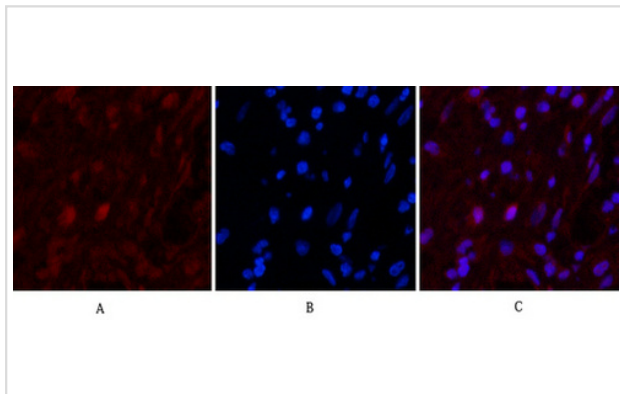


1B'B'Input: Hela Cell Lysate

2B'B'IP product: IP dilute 1:200

Western blot analysis: primary antibody : #38034 1:1,000

Secondary antibody: Goat anti-Mouse IgG, Light chain specific, 1:5,000



Immunofluorescence analysis of Human-appendix tissue.

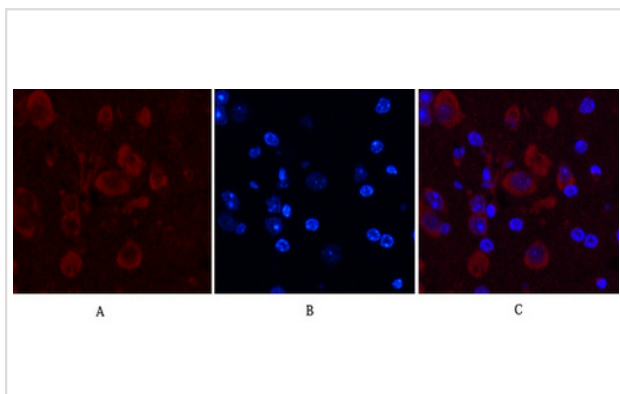
1,Caspase 9 Monoclonal Antibody(3-20)(red) was diluted at

1:200(4C,overnight). 2, Cy3 labeled Secondary antibody was

diluted at 1:300(room temperature, 50min).3, Picture B:

DAPI(blue) 10min. Picture A:Target. Picture B: DAPI. Picture

C: merge of A+B



Immunofluorescence analysis of Mouse-brain tissue.

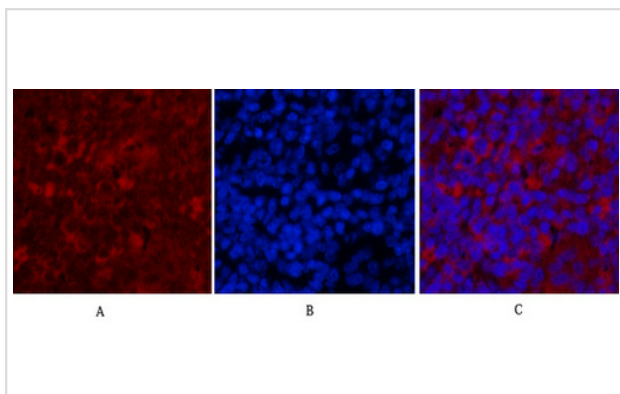
1,Caspase 9 Monoclonal Antibody(3-20)(red) was diluted at

1:200(4C,overnight). 2, Cy3 labeled Secondary antibody was

diluted at 1:300(room temperature, 50min).3, Picture B:

DAPI(blue) 10min. Picture A:Target. Picture B: DAPI. Picture

C: merge of A+B



Immunofluorescence analysis of Rat-spleen tissue. 1,Caspase

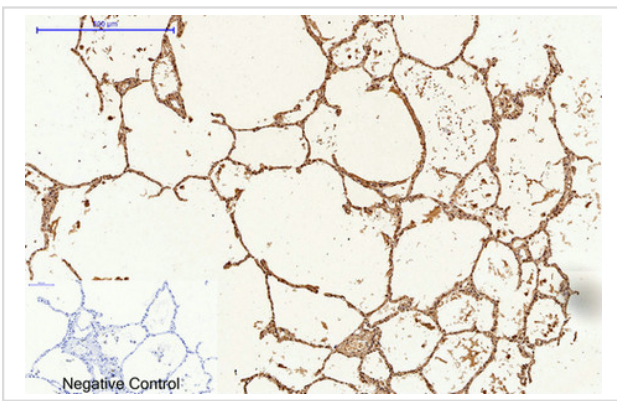
9 Monoclonal Antibody(3-20)(red) was diluted at

1:200(4C,overnight). 2, Cy3 labeled Secondary antibody was

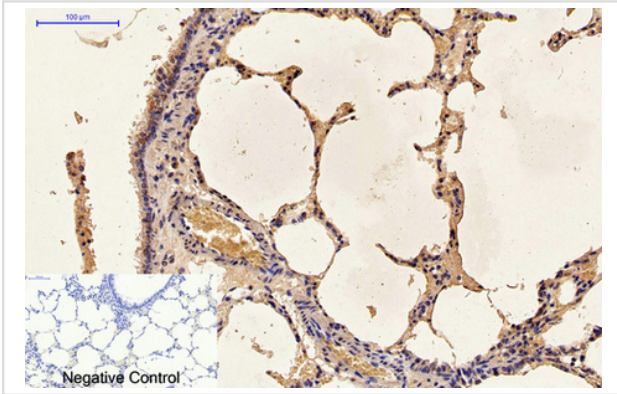
diluted at 1:300(room temperature, 50min).3, Picture B:

DAPI(blue) 10min. Picture A:Target. Picture B: DAPI. Picture

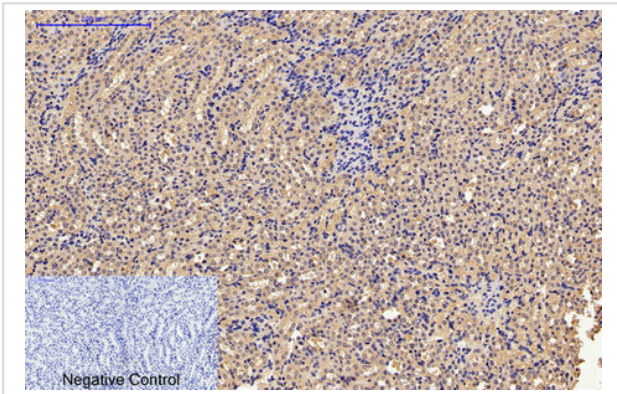
C: merge of A+B



Immunohistochemical analysis of paraffin-embedded Human-lung tissue. 1,Caspase 9 Monoclonal Antibody(3-20) was diluted at 1:200(4C,overnight). 2, Sodium citrate pH 6.0 was used for antibody retrieval(>98C,20min). 3,Secondary antibody was diluted at 1:200(room tempeRature, 30min). Negative control was used by secondary antibody only.



Immunohistochemical analysis of paraffin-embedded Rat-lung tissue. 1,Caspase 9 Monoclonal Antibody(3-20) was diluted at 1:200(4C,overnight). 2, Sodium citrate pH 6.0 was used for antibody retrieval(>98C,20min). 3,Secondary antibody was diluted at 1:200(room tempeRature, 30min). Negative control was used by secondary antibody only.



Immunohistochemical analysis of paraffin-embedded Mouse-kidney tissue. 1,Caspase 9 Monoclonal Antibody(3-20) was diluted at 1:200(4C,overnight). 2, Sodium citrate pH 6.0 was used for antibody retrieval(>98C,20min). 3,Secondary antibody was diluted at 1:200(room tempeRature, 30min). Negative control was used by secondary antibody only.

Background

Caspase-9 is an initiator caspase, encoded by the CASP9 gene. Binding of caspase-9 to Apaf-1 leads to activation of the protease which then cleaves and activates caspase-3. Proteolytically cleaves poly(ADP-ribose) polymerase (PARP).

Note: This product is for in vitro research use only