

Cytokeratin 6 Mouse Monoclonal Antibody

Catalog No: #38037

Orders: order@signalwayantibody.com

Support: tech@signalwayantibody.com

Description

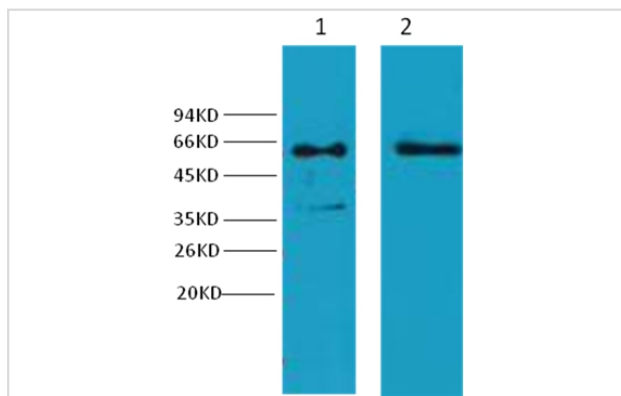
Product Name	Cytokeratin 6 Mouse Monoclonal Antibody
Host Species	Mouse
Clonality	Monoclonal
Purification	Affinity purification using immunogen.
Applications	WB,IHC,IF
Species Reactivity	Hu
Specificity	Cytokeratin 6 Mouse Monoclonal antibody detects endogenous Cytokeratin 6 proteins.
Target Name	Cytokeratin 6
SDS-PAGE MW	46-58kd
Concentration	1.0mg/ml
Formulation	Mouse IgG1 in phosphate buffered saline (without Mg ²⁺ and Ca ²⁺), pH 7.4, 150mM NaCl, 0.02% sodium azide and 50% glycerol.
Storage	Store at -20°C

Application Details

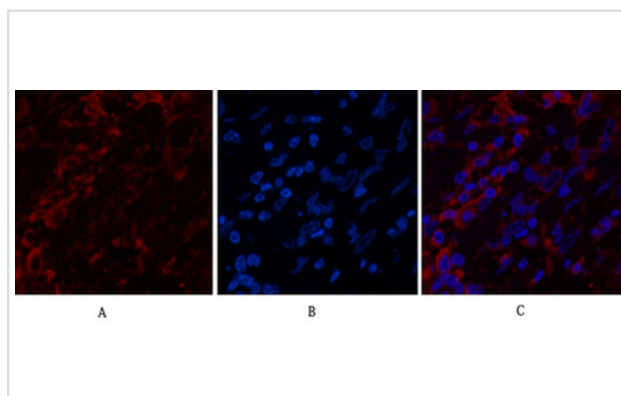
WB dilution: 1:1000~1:2000

IHC dilution:1:50-300IF dilution:1:200

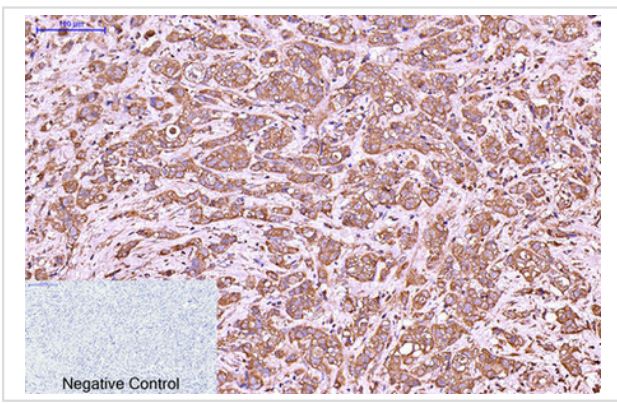
Images



Western blot analysis of 1) Hela, 2) HepG2 , using #38037 diluted at 1:2,000.



Immunofluorescence analysis of Human-breast-cancer tissue. 1,Cytokeratin 6 Monoclonal Antibody(4A1)(red) was diluted at 1:200(4C,overnight). 2, Cy3 labeled Secondary antibody was diluted at 1:300(room temperature, 50min).3, Picture B: DAPI(blue) 10min. Picture A:Target. Picture B: DAPI. Picture C: merge of A+B



Immunohistochemical analysis of paraffin-embedded Human-breast-cancer tissue. 1, Cytokeratin 6 Monoclonal Antibody(4A1) was diluted at 1:200(4C, overnight). 2, Sodium citrate pH 6.0 was used for antibody retrieval(>98C, 20min). 3, Secondary antibody was diluted at 1:200(room temperature, 30min). Negative control was used by secondary antibody only.

Background

Cytokeratins are proteins of keratin-containing intermediate filaments found in the intracytoplasmic cytoskeleton of epithelial tissue.

Note: This product is for in vitro research use only