

# CK17 Mouse Monoclonal Antibody

Catalog No: #38038

Orders: [order@signalwayantibody.com](mailto:order@signalwayantibody.com)

Support: [tech@signalwayantibody.com](mailto:tech@signalwayantibody.com)

## Description

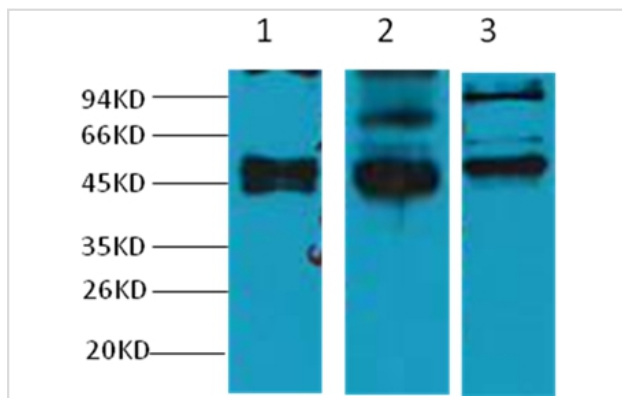
Product Name	CK17 Mouse Monoclonal Antibody
Host Species	Mouse
Clonality	Monoclonal
Purification	Affinity purification using immunogen.
Applications	WB,IHC,IF
Species Reactivity	Hu
Specificity	CK17 Mouse Monoclonal antibody detects CK17 endogenous proteins.
Target Name	CK17
SDS-PAGE MW	48kd
Concentration	1.0mg/ml
Formulation	Mouse IgG1 in phosphate buffered saline (without Mg2+ and Ca2+), pH 7.4, 150mM NaCl, 0.02% sodium azide and 50% glycerol.
Storage	Store at -20°C

## Application Details

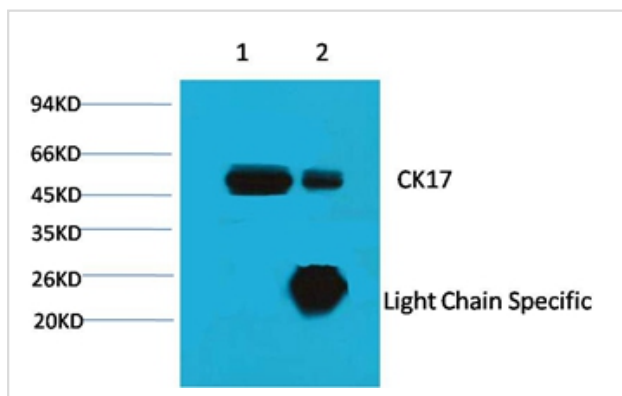
WB dilution: 1:1000~1:2000

IP dilution: 1:200IHC dilution:1:50-300IF dilution:1:200

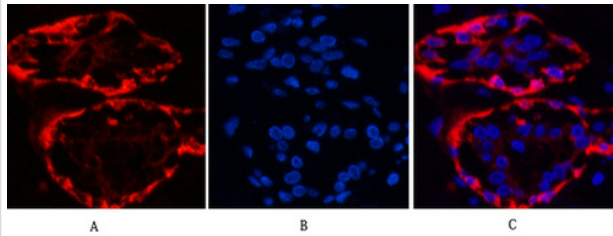
## Images



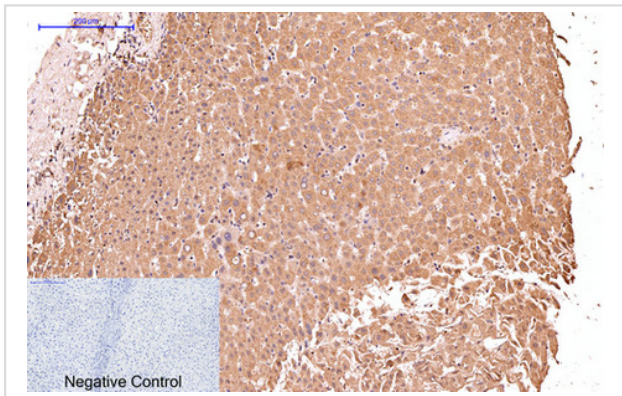
Western blot analysis of 1) HeLa, 2) MCF7, 3) 293T, using #38038 diluted at 1:2,000.



1B' Input: HeLa Cell Lysate  
 2B' IP product: IP dilute 1:200  
 Western blot analysis: primary antibody : #38038 1:1,000  
 Secondary antibody: Goat anti-Mouse IgG, Light chain specific, 1:5,000



Immunofluorescence analysis of Human-breast tissue. 1,CK17 Monoclonal Antibody(10A1)(red) was diluted at 1:200(4C,overnight). 2, Cy3 labeled Secondary antibody was diluted at 1:300(room temperature, 50min).3, Picture B: DAPI(blue) 10min. Picture A:Target. Picture B: DAPI. Picture C: merge of A+B



Immunohistochemical analysis of paraffin-embedded Human-liver tissue. 1,CK17 Monoclonal Antibody(10A1) was diluted at 1:200(4C,overnight). 2, Sodium citrate pH 6.0 was used for antibody retrieval(>98C,20min). 3,Secondary antibody was diluted at 1:200(room temperature, 30min). Negative control was used by secondary antibody only.

## Background

Cytokeratin17 (CK17) is a protein that in humans is encoded by the KRT17 gene. It is found in nail beds, hair follicles, sebaceous glands, and other epidermal appendages. Mutations in the gene encoding this protein lead to Jackson-Lawler type pachyonychia congenita and steatocystoma multiplex.

Note: This product is for in vitro research use only