

CD23 Mouse Monoclonal Antibody

Catalog No: #38039

Orders: order@signalwayantibody.com

Support: tech@signalwayantibody.com

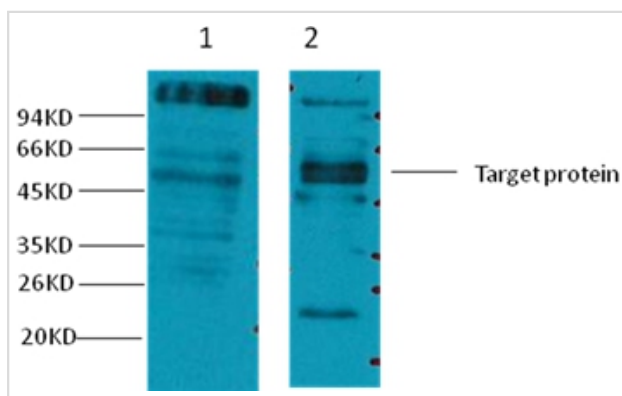
Description

Product Name	CD23 Mouse Monoclonal Antibody
Host Species	Mouse
Clonality	Monoclonal
Purification	Affinity purification using immunogen.
Applications	WB
Species Reactivity	Hu Rt Ms
Specificity	Antibody detects endogenous CD23 protein.
Target Name	CD23
Other Names	Fc fragment of IgE, high affinity I, receptor for; Fc-epsilon RI-gamma; FCER1G; FCERG
Accession No.	Swiss-Prot#:P30273
Uniprot	P30273
GeneID	2207;
SDS-PAGE MW	10kd
Concentration	1.0mg/ml
Formulation	Mouse IgG1 in phosphate buffered saline (without Mg2+ and Ca2+), pH 7.4, 150mM NaCl, 0.02% sodium azide and 50% glycerol.
Storage	Store at -20°C

Application Details

Western blotting: 1:1000~1:2000

Images



Western blot analysis of 1) Hela, 2) Mouse Brain tissue , using #38039 diluted at 1:2,000.

Background

CD23, also known as Fc epsilon RII, or FcεRII, is the "low-affinity" receptor for IgE, an antibody isotype involved in allergy and resistance to parasites, and is important in regulation of IgE levels. Unlike many of the antibody receptors, CD23 is a C-type lectin. It is found on mature B cells, activated macrophages, eosinophils, follicular dendritic cells, and platelets

Note: This product is for in vitro research use only