

alpha Lactalbumin Mouse Monoclonal Antibody

Catalog No: #38041

Orders: order@signalwayantibody.comSupport: tech@signalwayantibody.com

Description

Product Name	alpha Lactalbumin Mouse Monoclonal Antibody
Host Species	Mouse
Clonality	Monoclonal
Purification	Affinity purification using immunogen.
Applications	WB,IHC,IF
Species Reactivity	Hu B
Specificity	alpha Lactalbumin Mouse Monoclonal antibody detects endogenous alpha Lactalbumin protein.s
Target Name	alpha Lactalbumin
Other Names	Lactose synthase B protein Lysozyme-like protein 7
Accession No.	Swiss-Prot#P00709
Uniprot	P00709
GeneID	3906;
SDS-PAGE MW	16kd
Concentration	1.0mg/ml
Formulation	Mouse IgG1 in phosphate buffered saline (without Mg2+ and Ca2+), pH 7.4, 150mM NaCl, 0.02% sodium azide and 50% glycerol.
Storage	Store at -20°C

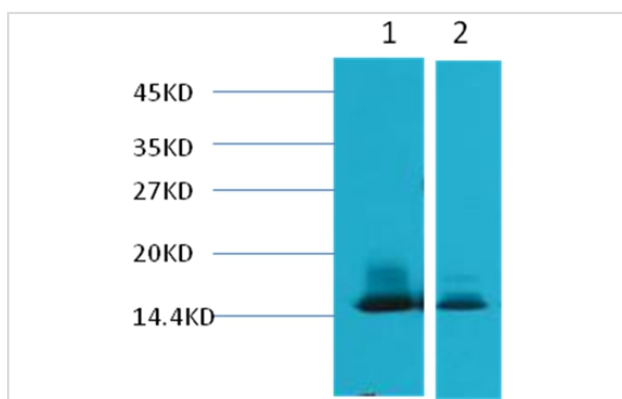
Application Details

WB dilution: 1:1000~1:3000

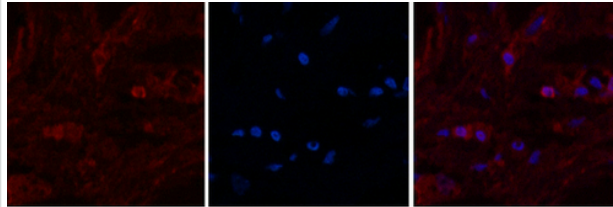
IHC dilution:1:50-300

IF dilution:1:200

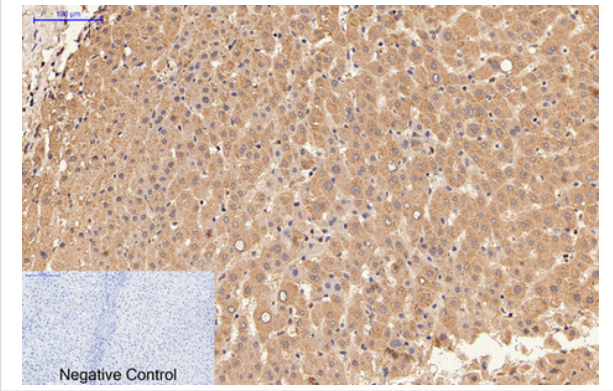
Images



Western blot analysis of 1) Human Milk, 2) Milk, using #38041 diluted at 1:3,000.



Immunofluorescence analysis of Human-breast tissue. 1, alpha Lactalbumin Monoclonal Antibody(9E9)(red) was diluted at 1:200(4C, overnight). 2, Cy3 labeled Secondary antibody was diluted at 1:300(room temperature, 50min). 3, Picture B: DAPI(blue) 10min. Picture A: Target. Picture B: DAPI. Picture C: merge of A+B



Immunohistochemical analysis of paraffin-embedded Human-liver tissue. 1, alpha Lactalbumin Monoclonal Antibody(9E9) was diluted at 1:200(4C, overnight). 2, Sodium citrate pH 6.0 was used for antibody retrieval(>98C, 20min). 3, Secondary antibody was diluted at 1:200(room temperature, 30min). Negative control was used by secondary antibody only.

Background

In primates, alpha-lactalbumin expression is upregulated in response to the hormone prolactin and increases the production of lactose. α -Lactalbumin forms the regulatory subunit of the lactose synthase (LS) heterodimer and β -1,4-galactosyltransferase (β 4Gal-T1) forms the catalytic component.

Note: This product is for in vitro research use only